

COLORS



Exotic spices, Tuscany, Provence and the ever-changing blues of the Mediterranean inspire our rich color palette.

Either solid or brushed, our 36 shades transcend color, evoking a sense of richness and warmth.

NEW COLORS

COPPER



SILVER

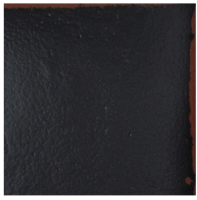


GOLD

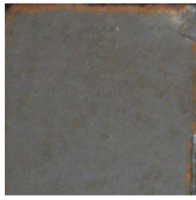


Ranging from sleek and modern to subtle and calm, our new metallics can be used as field or as base for any deco.

FIELD COLORS (for better color accuracy please refer to control samples)



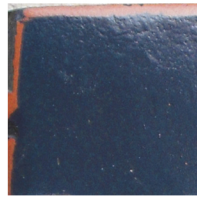
charcoal



oxford



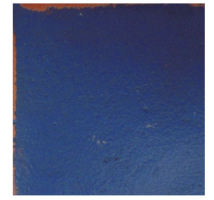
gray



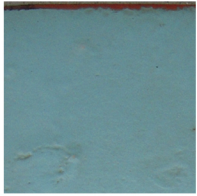
mezzanotte



royal blue



colonial blue



turquoise



robin's egg



aqua



eilat



extra virgin



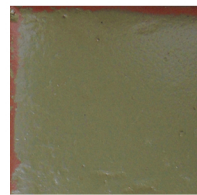
antique green



green tea



salvia



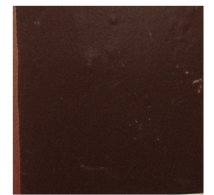
zahatar



negev



dark stain



mocka



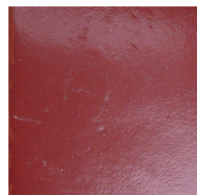
java



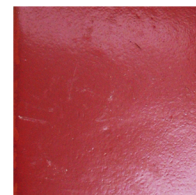
toscana



caramelo



paprika



oriental red



uva



pinot



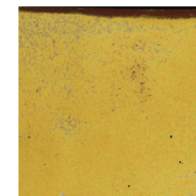
petel



coral



saffron



honey



ochre



banana



vanilla



sand



latte



off white



lavan

"Color is my daylong obsession, joy, and torment." - Claude Monet

BRUSHED COLORS



charcoal



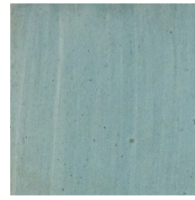
oxford



gray



mezzanotte



royal blue



colonial blue



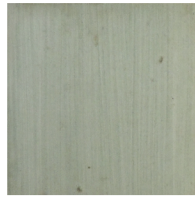
turquoise



robin's egg



aqua



eilat



extra virgin



antique green



green tea



salvia



zahatar



negev



dark stain



mocka



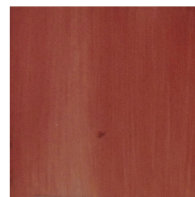
java



toscana



caramelo



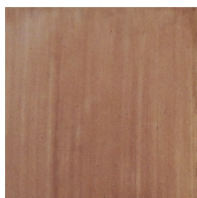
paprika



oriental red



uva



pinot



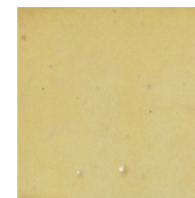
petel



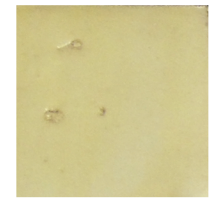
coral



saffron



honey



ochre



banana



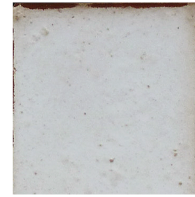
vanilla



sand



latte



off white



lavan