



Downtown Marengo 32"x32"

# DOWNTOWN

Colored Body Porcelain



Blanco  
32"x32" R  
FJTT6AE011



Grey  
32"x32" R  
FJTT6AE021



Marengo  
32"x32" R  
FJTT6AE031



Antracita  
32"x32" R  
FJTT6AE311



Blanco  
24"x24" R  
FJTT660011



Grey  
24"x24" R  
FJTT660021



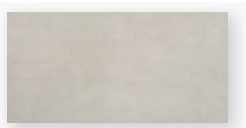
Marengo  
24"x24" R  
FJTT660031



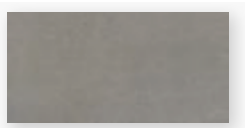
Antracita  
24"x24" R  
FJTT660311



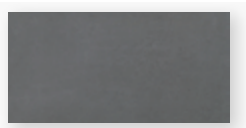
Blanco  
12"x24" R  
FJTT657011



Grey  
12"x24" R  
FJTT657021



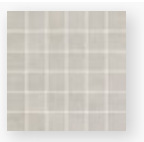
Marengo  
12"x24" R  
FJTT657031



Antracita  
12"x24" R  
FJTT657311



Blanco  
12"x12" Mosaic  
FJT7T30011



Grey  
12"x12" Mosaic  
FJT7T30021



Marengo  
12"x12" Mosaic  
FJT7T30031



Antracita  
12"x12" Mosaic  
FJT7T30311



Downtown Gris 32"x32"

# Technical Specs

Characteristics	Standard	Declared ASTM
Water Absorption	C373	<=0.1%
Break Strength	C648	Min. 450
Scratch Hardness	MOH's Scale	7
Chemical Resistance	C650	Unaffected
Frost Resistance	C1026	Resistant
Group	SEE FAQs	4
Deep Abrasion - Unglazed Tiles	C1243	Pass
PEI - Glazed Tiles***	C1027	-
Minimum Bond Strength (PSI)	C482	165
Dynamic Coefficient of Friction (DCOF)	A137.1	>=0.42
Shade and Texture Rating	CTDA "V"	V3
Facial Dimensions	C499	Pass
Range of Thickness	C499	Pass
Warpage	C485	Pass
Wedging	C502	Pass

# Packaging Info

Size	SF. Per Carton	Pieces Per Carton
32"x32"	13.78	2
24"x24"	15.50	4
12"x24"	13.56	7
12"x12" Mosaic	5.81	6