

FRENCH VANILLA

Marble

Far Beyond the Surface

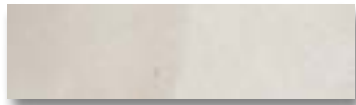
Field Tiles



12" x 24" French Vanilla

(H) MB1229-1224H0

(P) MB1229-1224P0



4" x 12" French Vanilla

(H) MB1229-0412H0

(P) MB1229-0412P0



3" x 9" French Vanilla

(H) MB1229-0309H0

(P) MB1229-0309P0



12" Narrow Liner French Vanilla

(H) MB1229-NL12H0

(P) MB1229-NL12P0



12" Classic Rail French Vanilla

(H) MB1229-RM12H0

(P) MB1229-RM12P0

Product shown on cover: 3" x 9" French Vanilla (H), Ivy French Vanilla (H&P)
12" Narrow Liner French Vanilla (H)

Product shown: 4" x 12" French Vanilla (H),
Basket Weave French Vanilla (H) w/ Thassos (H), 12" x 24" French Vanilla (H)



FRENCH VANILLA



1" x 4" Herringbone French Vanilla

(H) MB1229-HB14HO
(P) MB1229-HB14PO



Basket Weave
French Vanilla w/ Thassos

(H) MB1229-BASIHO
(P) MB1229-BASIPO



Hexagon French Vanilla

(H) MB1229-HEXAHO
(P) MB1229-HEXAPO



Hexagon 37/8" French Vanilla

(H) MB1229-HEX3HO
(P) MB1229-HEX3PO



Hoshi French Vanilla

(H) MB1229-HOSHHO

(P) MB1229-HOSHPO



Ivy French Vanilla (H&P)

MB1229-IVY000



Nami French Vanilla

(H) MB1229-NAMIHO

(P) MB1229-NAMIPO



CONVERSION CHART

PROFILE	SIZE
3" x 9"	3" x 9" = 0.187 sqft (+/-)
4" x 12"	4" x 12" = .333 sqft (+/-)
12" x 24"	12" x 24" = 2 sqft (+/-)
Basket Weave	9.75" x 9.75" = .66 sqft
1" x 4" Herringbone	9" x 11.5" = .72 sqft
Hexagon 3-7/8	7.88" x 10.25" = .560 sqft
Hexagon	9.75" x 10.13" = .69 sqft
Hoshi	10.15" x 11.75" = .828 sqft
Ivy	9.88" x 11.75" = .814 sqft
Nami	9.88" x 12" = .825 sqft
Narrow Liner	11 9/16" x 1/2" = 1 lnft
Classic Rail	12" x 1 3/8" = 1 lnft

APPLICATIONS

WALL	FLOOR	TRAFFIC	INTERIOR	EXTERIOR FREEZE/THAW	STEAM SHOWER	WET AREA
Yes	Yes	Standard Commercial	Yes	No	Yes- If properly sealed	Yes- If properly sealed
SHOWER PAN	POOL	BACKSPLASH	FIREPLACE SURROUND			
Yes- If properly sealed	No	Yes	Yes			

TECHNICAL DATA

FEATURES	SPECIFICATION
DCOF – ANSI A.137.1	<p>Due to the natural characteristics and variation in natural stone, slip resistance will vary. Such factors are dependent on lots, finish and the topical sealant applied. There is currently no standard industry test with the ability to measure the exact slip resistance.</p> <p>To reduce the slipperiness of stone surfaces, AKDO suggests selecting a non-Polished finish such as Honed, Sandblasted, or Textured stone, or choosing a mosaic, as the grout joints in the stone result in an increase of friction.</p>

Due to the inherent characteristics of natural stone, there may be variations in color, movement and texture from lot to lot. For detailed installation guidelines, visit akdo.com.

AKDO

1435 State Street
Bridgeport, CT 06605
1.800.811.2536
203.336.5199 (o)
203.336.0603 (f)

AKDO NYC

22 West 21st Street
New York, NY 10010
1.800.811.2536
212.485.0448 (o)
212.485.0449 (f)

AKDO Pacific

3445 Arden Road
Hayward, CA 94545
1.888.909.2536
510.785.2536 (o)
510.785.0895 (f)

akdo.com

