



SOLID

W|O|W

## SOLID

A new geometry in perfect balance.

A tool to allow freedom of design through an elegant range of colours in 5 modular sizes.

Pushing the boundaries, the key ingredients are: porcelain, rectified, coloured through body and its modularity as the inspiration for efficient design.

Innovative and combinable in an infinite number of ways.



unexpected surfaces

<b>01.</b> SIZES, COLOURS AND FINISHES / FORMATOS, COLORES Y ACABADOS	<i>pag. 4</i>
<b>02.</b> GET INSPIRED / INSPIRATE	<i>pag. 6</i>
<b>03.</b> LAYOUTS / COLOCACIONES	<i>pag. 35</i>
<b>04.</b> RECOMMENDATIONS / RECOMENDACIONES	<i>pag. 40</i>
<b>05.</b> TECHNICAL FEATURES / CARACTERÍSTICAS TÉCNICAS	<i>pag. 41</i>
<b>06.</b> TECHNICAL DRAWINGS / DIBUJOS TÉCNICOS	<i>pag. 42</i>
<b>07.</b> PACKING	<i>pag. 43</i>



## SOLID

---



Chalk



Sky



Cotto



Moss



Ash



Basalt

## FORMATS

---



XL  
25x25cm /  
10"X10"



L  
12,5x25cm /  
5"X10"



M  
12,5x12,5cm /  
5"X5"

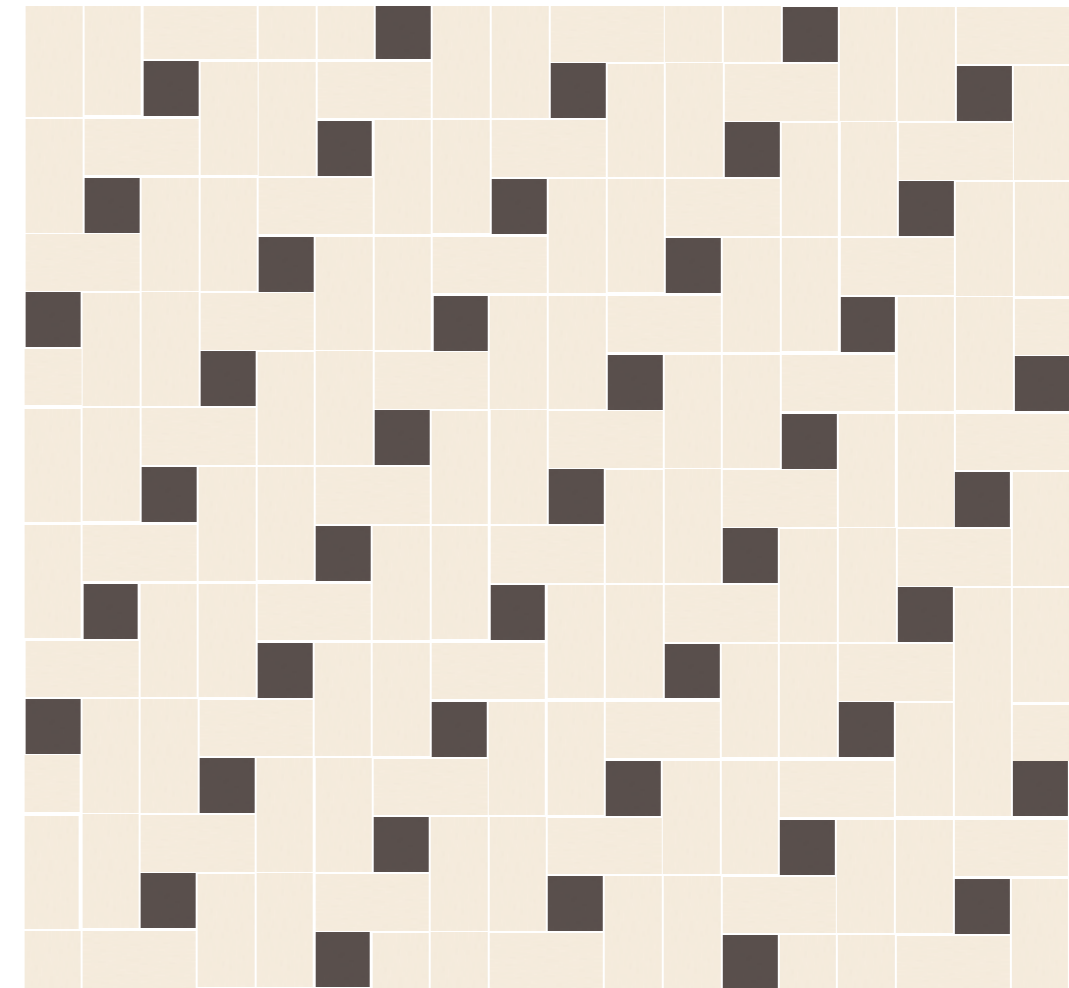


S  
6,2x12,5cm /  
2.5"X5"



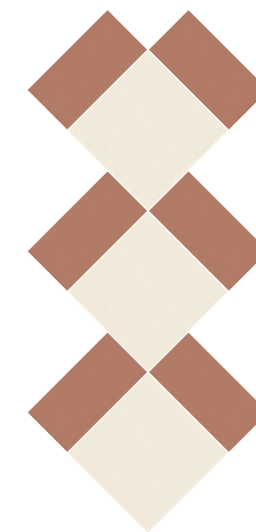
XS  
6,2x6,2cm /  
2.5"X2.5"





**Solid S** Chalk - 86%  
**Solid XS** Basalt - 14%

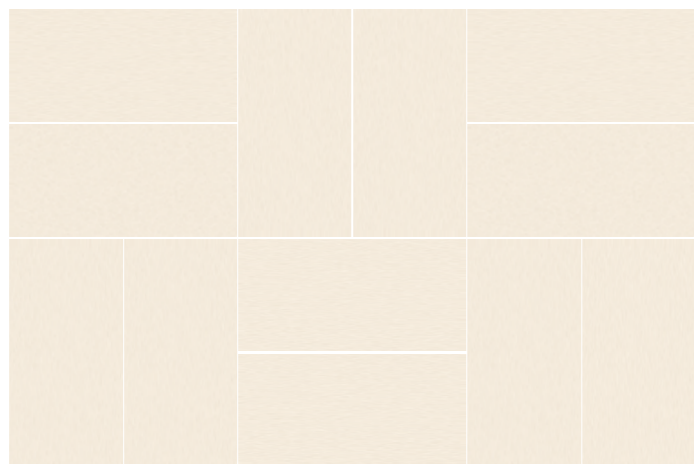




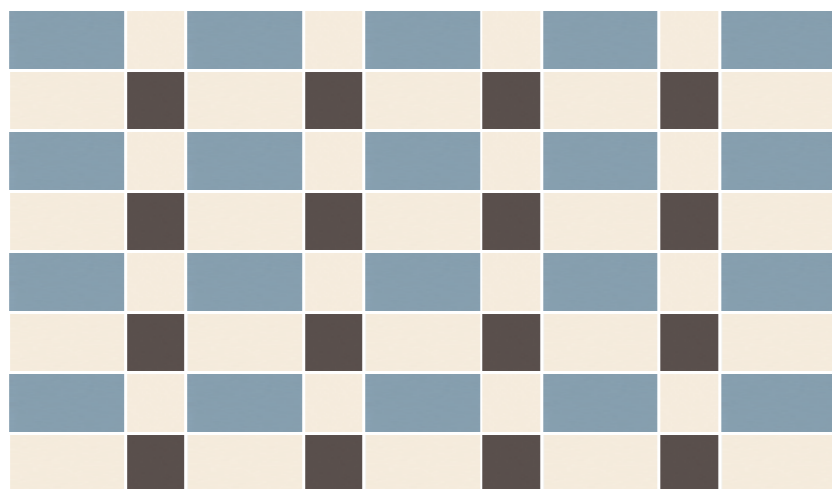
Wall tiles:  
**Solid S** Chalk - 14%  
**Solid XS** Cotto - 86%

Floor tiles:  
**Solid S** Cotto - 50%  
**Solid M** Chalk - 50%





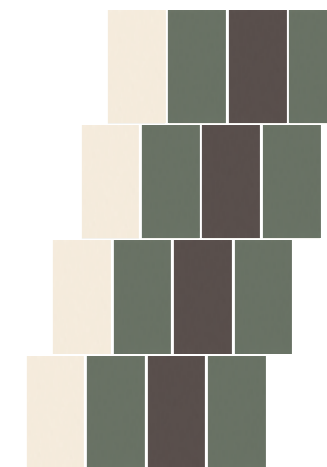
**Solid L** Chalk - 100%



**Solid XS** Chalk - 17% & Basalt - 17%  
**Solid S** Sky - 33% & Chalk - 33%







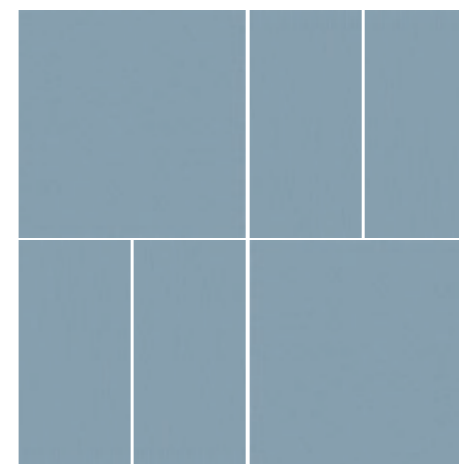
Wall tiles:  
**Solid S** Moss - 100%

Floor tiles:  
**Solid S** Moss - 50%  
Chalk - 25% & Basalt - 25%

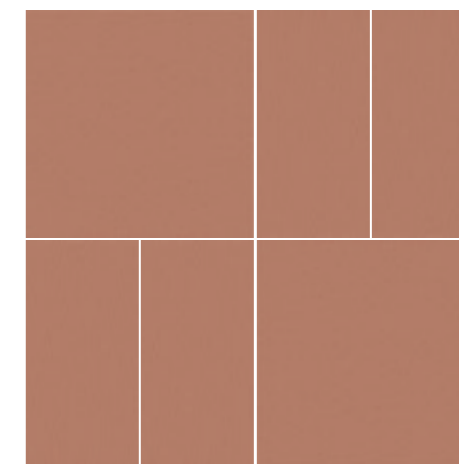




Floor tiles:  
**Contempo Strip** Natural  
(Love Affairs Collection)

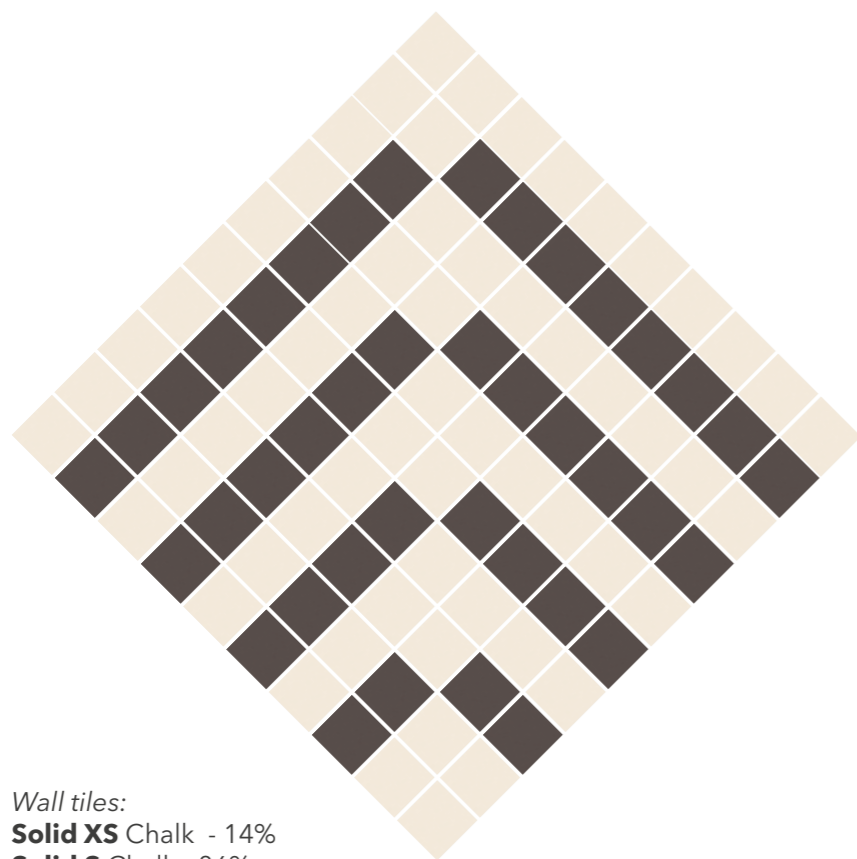


**Solid XL** Sky - 50%  
**Solid L** Sky - 50%



**Solid XL** Cotto - 50%  
**Solid L** Cotto - 50%





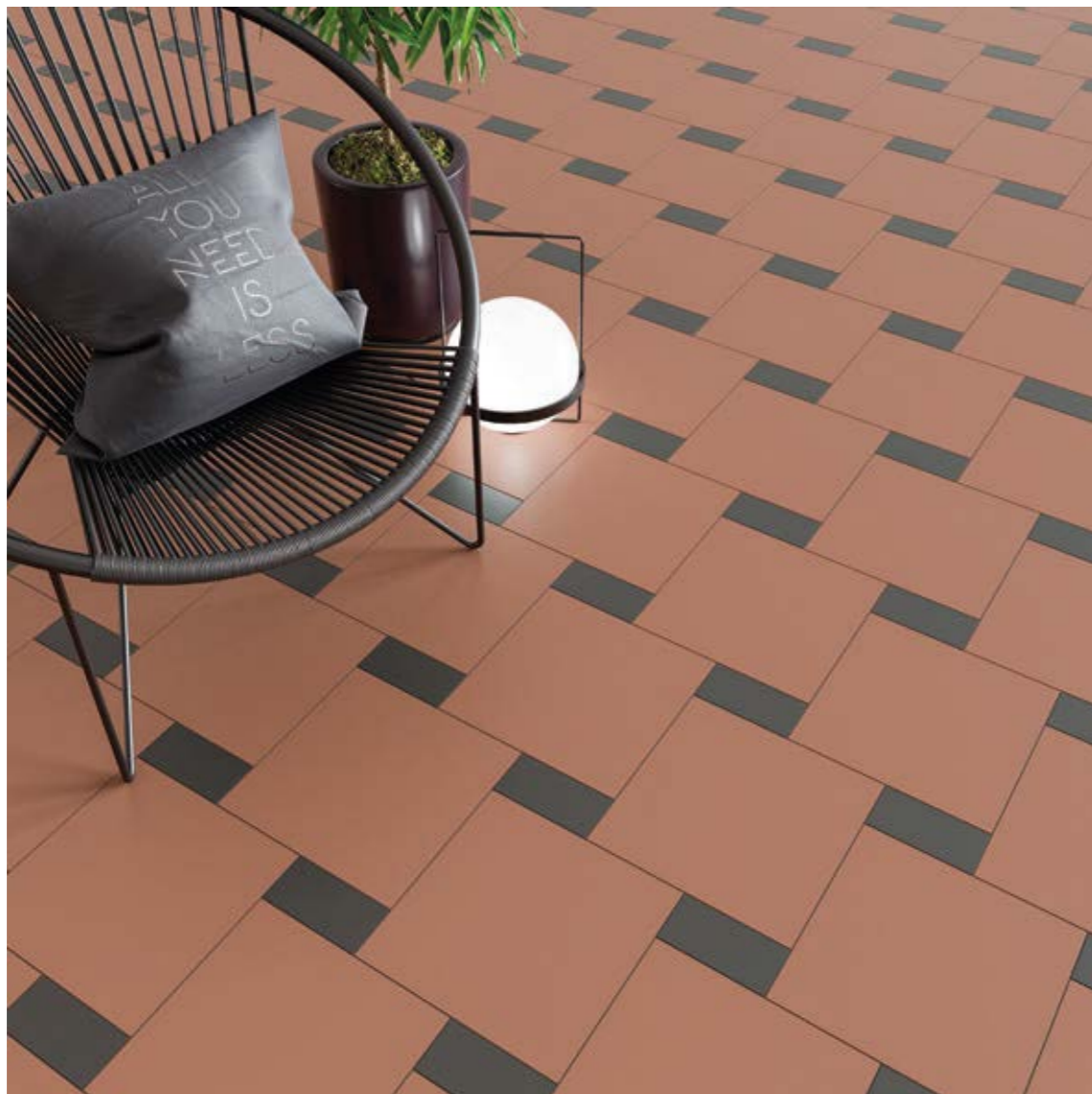
Wall tiles:  
**Solid XS** Chalk - 14%  
**Solid S** Chalk - 86%

Floor tiles:  
**Solid XS** Chalk - 60%  
& Basalt - 40%

Bar tiles:  
**Moon** Graphite Matt  
(Wow Collection)





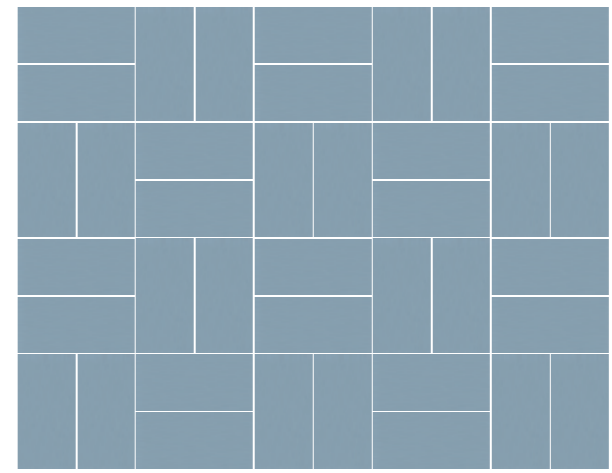


**Solid XL** Cotto - 89%  
**Solid S** Basalt - 11%

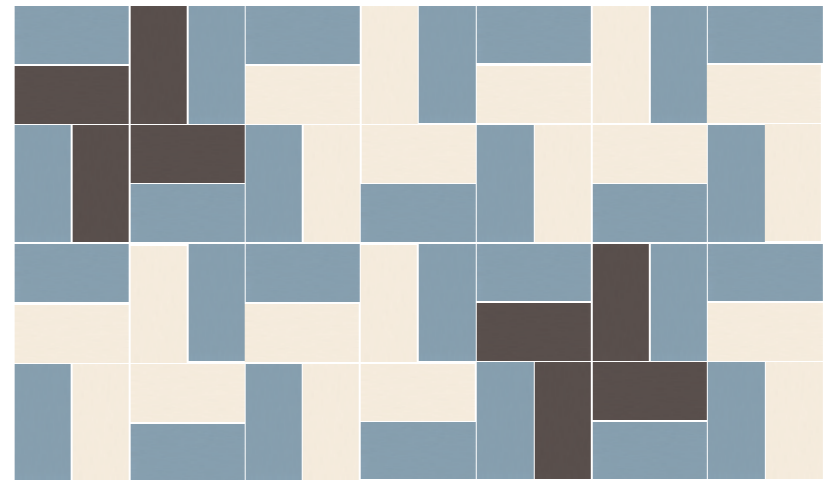


**Solid XS** Moss - 12,5% & Cotto - 12,5%  
**Solid S** Moss - 50% & Chalk - 25%





**Solid S Sky - 100%**



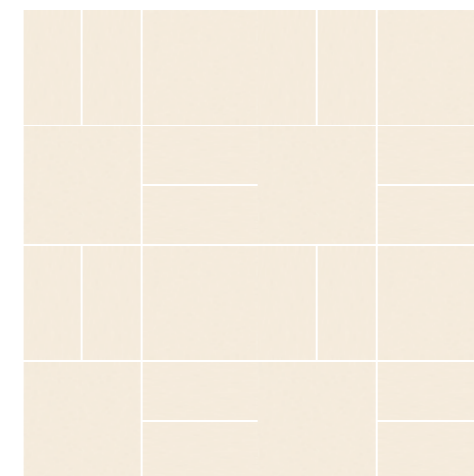
**Solid S Sky - 50%, Chalk - 36% & Basalt - 14%**



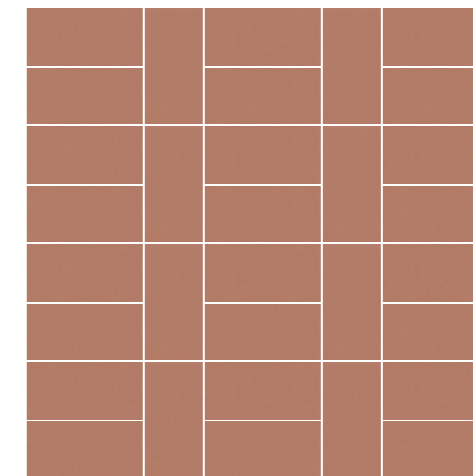


Wall tiles:  
**Solid L** Ash - 50%  
**Solid XL** Ash - 50%

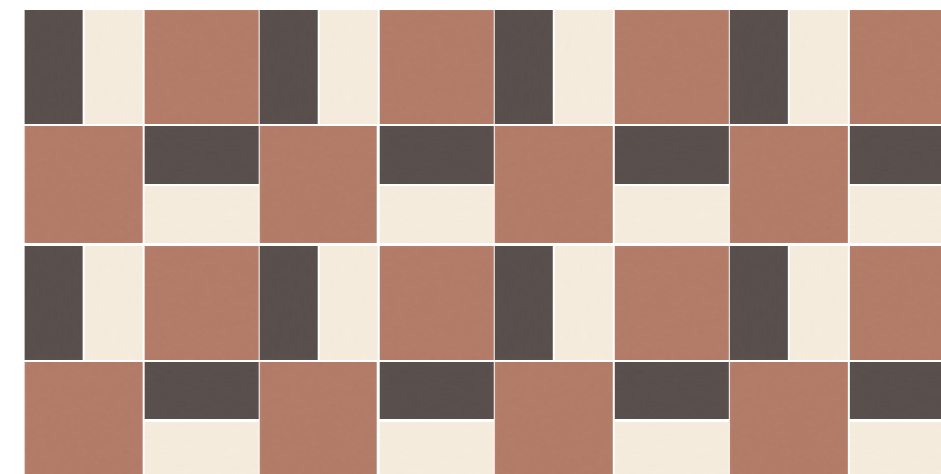
Floor tiles:  
**Solid L** Ash - 25% & Moss 25%  
**Solid XL** Chalk - 50%



**Solid M** Chalk - 50%  
**Solid S** Chalk - 50%

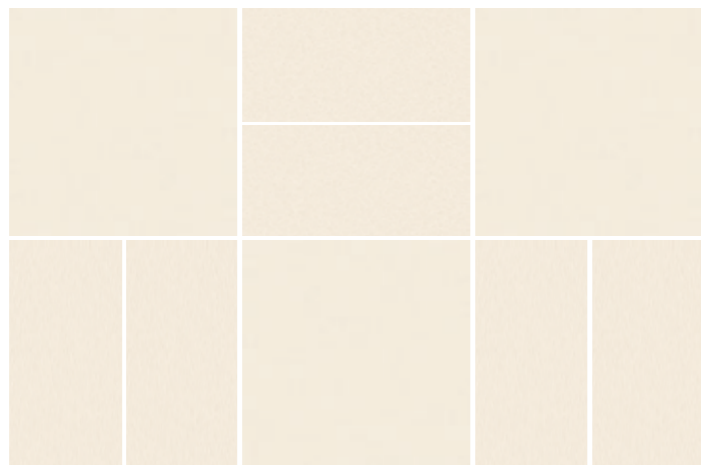


**Solid S** Cotto - 100%

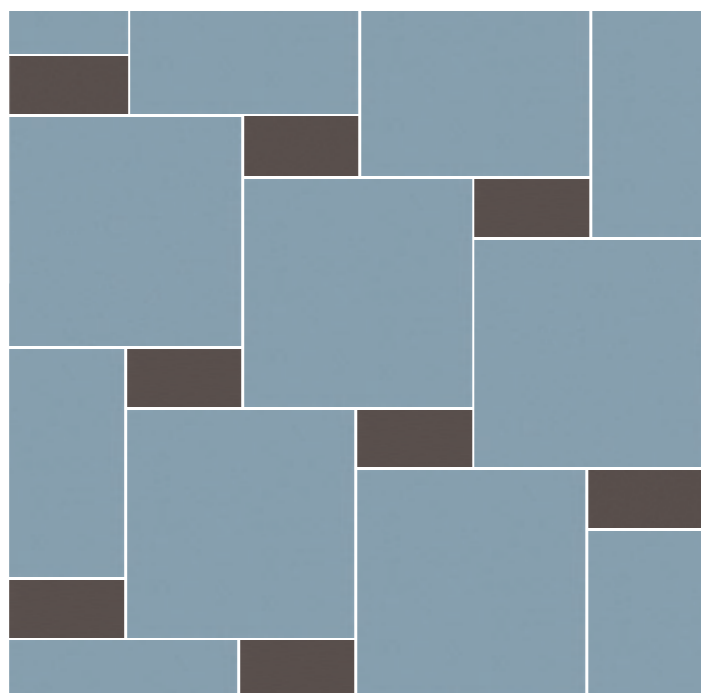


**Solid M** Cotto - 50%  
**Solid S** Chalk - 25% & Basalt - 25%





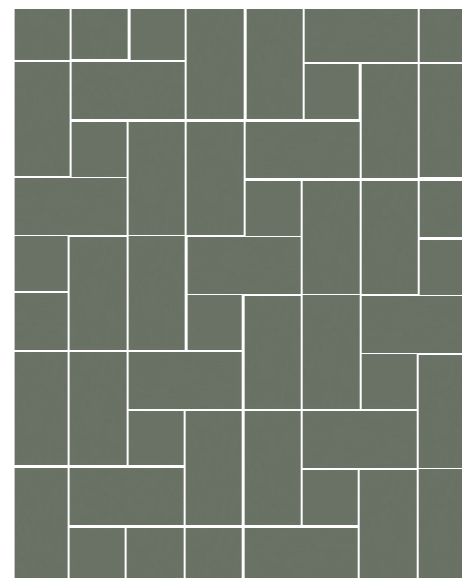
**Solid XL** Chalk - 50%  
**Solid L** Chalk - 50%



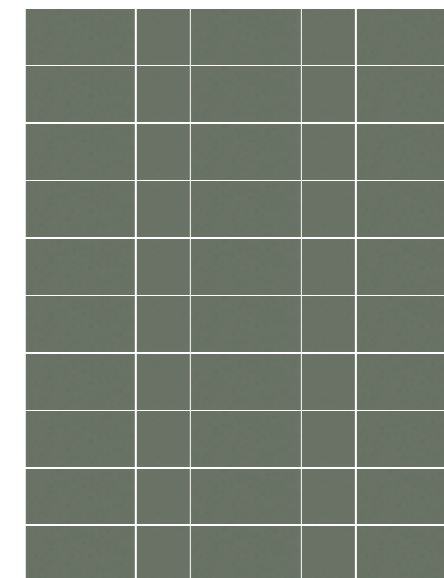
**Solid XL** Sky - 89%  
**Solid S** Basalt - 11%



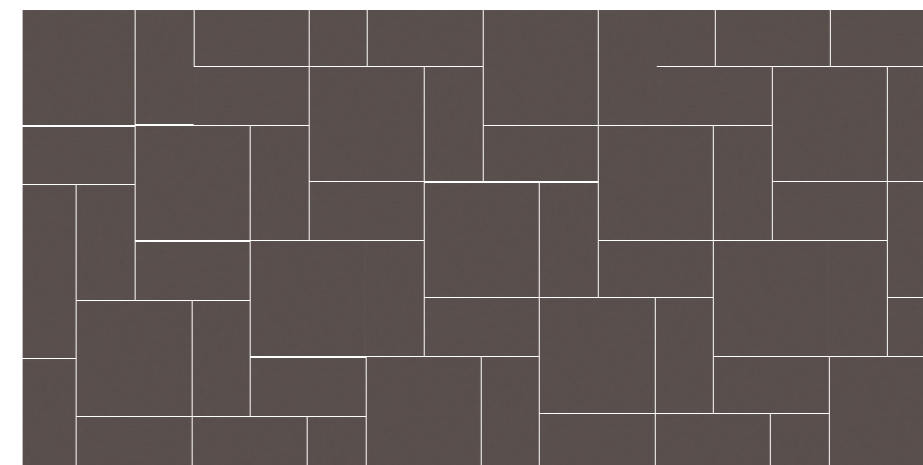




**Solid S** Moss - 86%  
**Solid XS** Moss - 14%

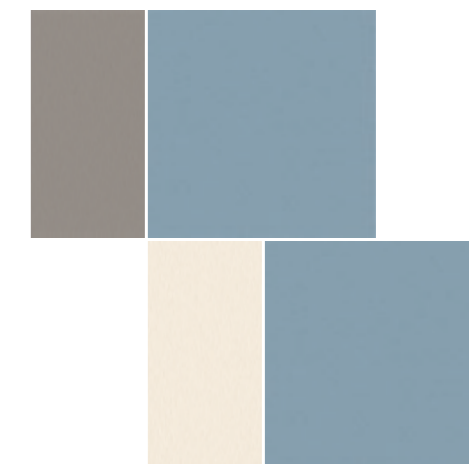


**Solid S** Moss - 67%  
**Solid XS** Moss - 33%



**Solid M** Basalt - 50%  
**Solid S** Basalt - 50%

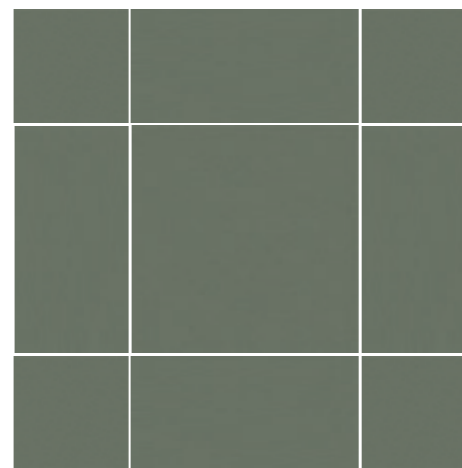




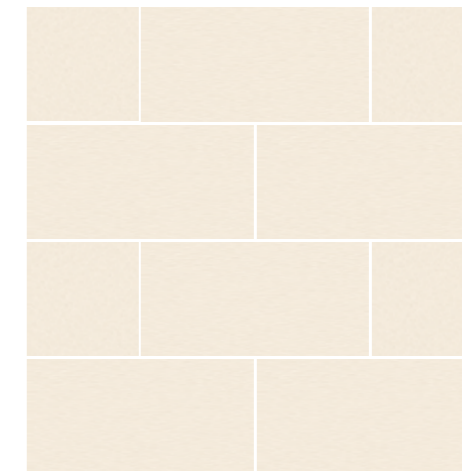
Wall tiles:  
**Solid L** Chalk - 16,5% & Ash - 16,5%  
**Solid XL** Sky - 67%

Other tiles:  
**Contempo Strip** Natural  
(Love Affairs Collection)

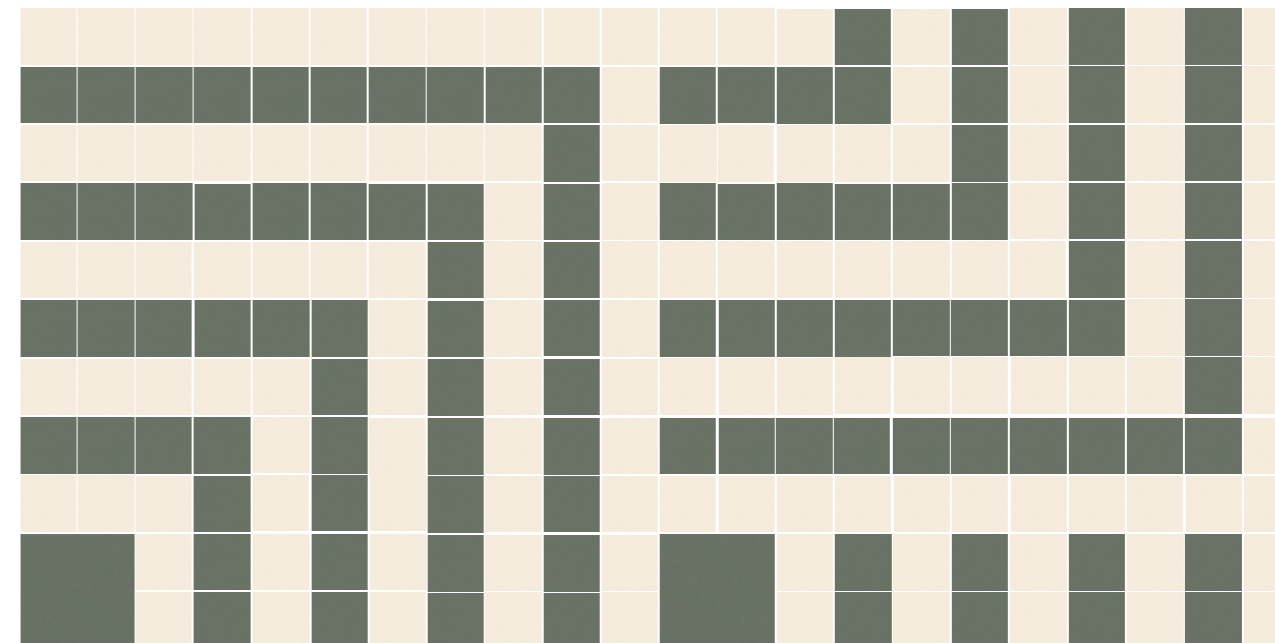




**Solid XL** Moss - 25%  
**Solid L** Moss - 50%  
**Solid M** Moss 25%

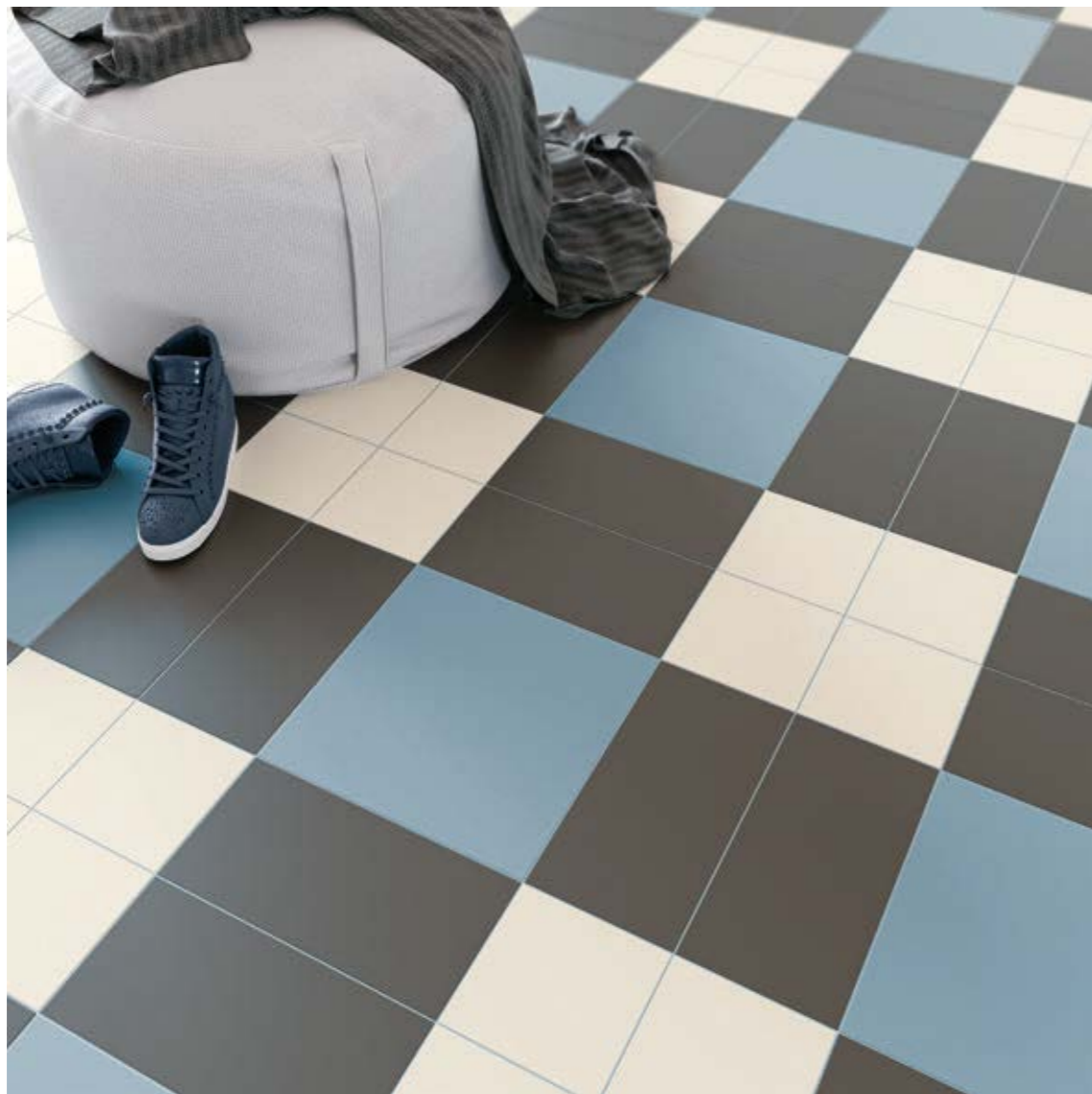


**Solid L** Chalk 100%



**Solid M** Moss - 3,5%  
**Solid XS** Moss - 43% & Chalk - 53,5%



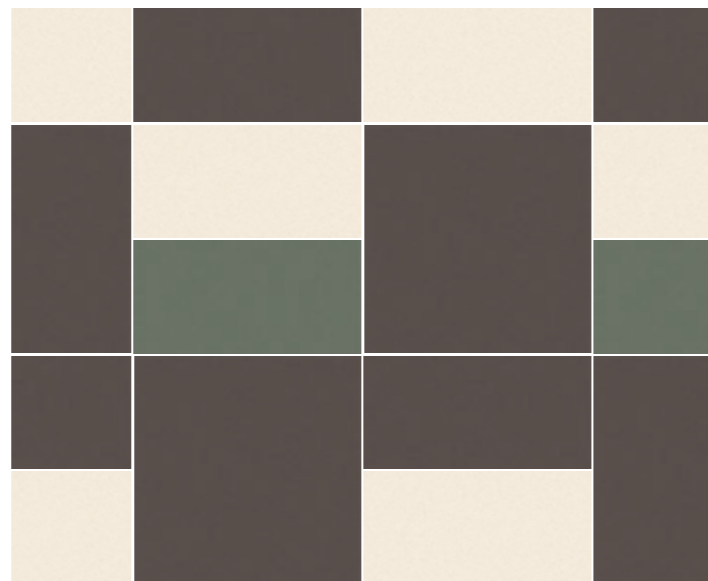


**Solid XL** Sky - 25%  
**Solid L** Basalt - 50%  
**Solid M** Chalk 25%

UNLIMITED COMPOSITIONS



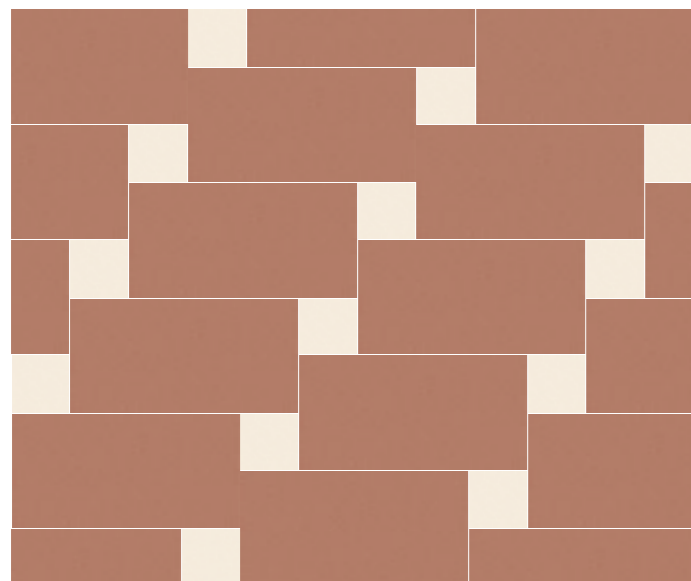
**Solid S** Ash - 50%  
**Solid S** Sky - 50%



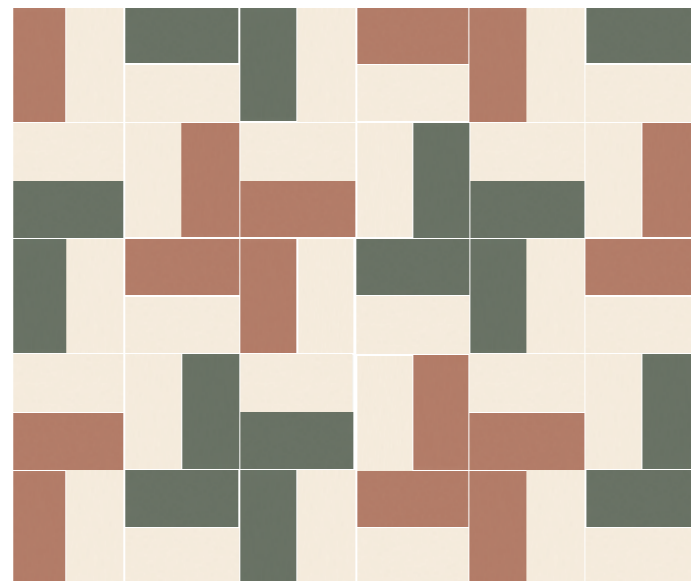
**Solid S** Chalk - 25%, Basalt - 12,5% & Moss - 12,5%  
**Solid M** Basalt - 50%



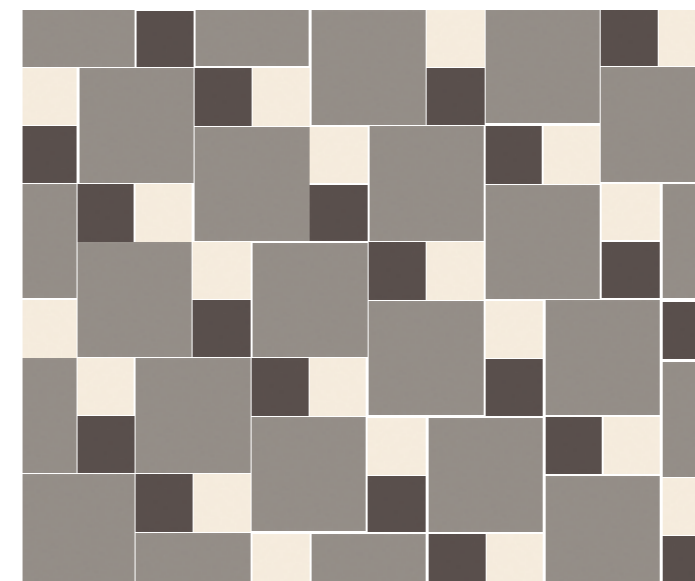
**Solid XS** Chalk - 60%  
Basalt - 36% & Cotto 4%



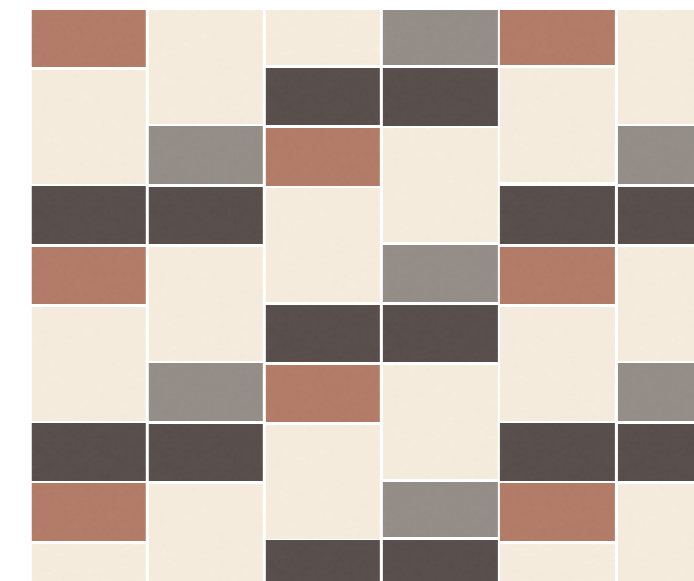
**Solid L** Cotto - 80%  
**Solid XS** Chalk - 20%



**Solid S** Chalk - 50%, Cotto - 25% & Moss - 25%

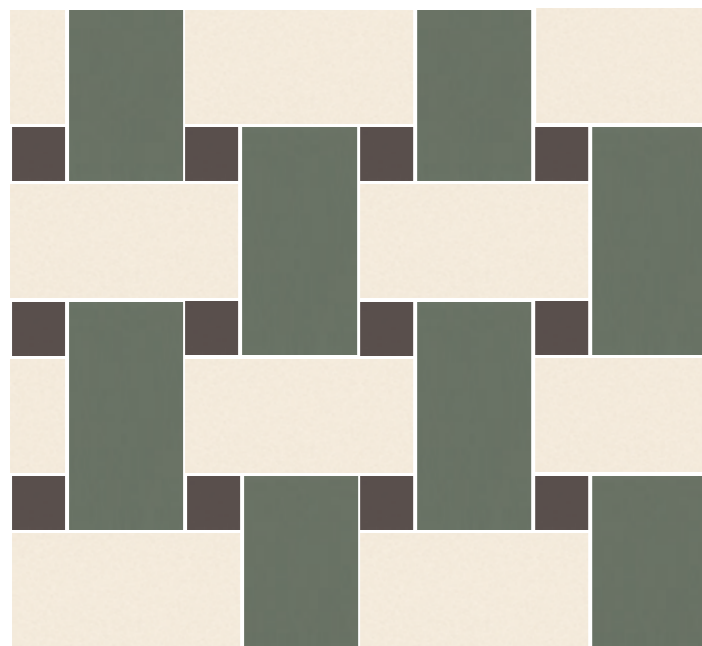


**Solid M** Ash - 77%  
**Solid XS** Chalk - 16,5% & Basalt - 16,5%

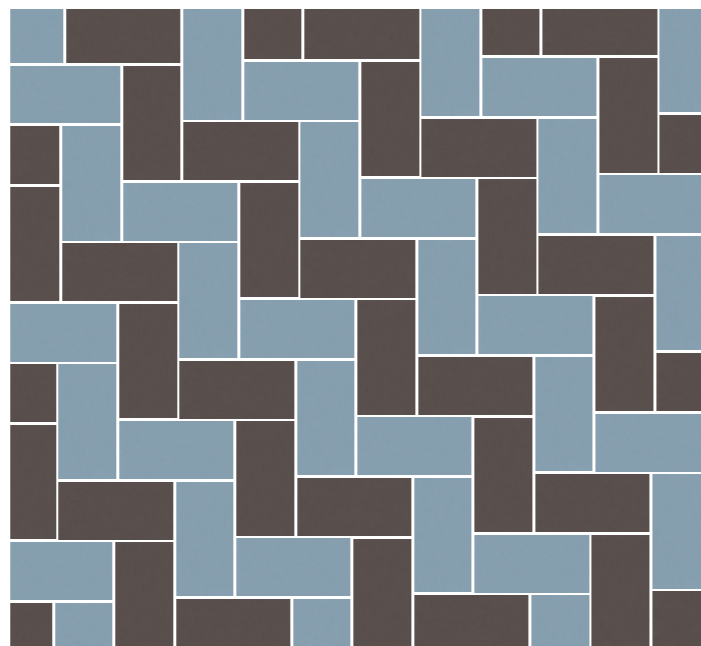


**Solid M** Chalk - 50%  
**Solid S** Basalt - 25%, Cotto - 12% & Ash - 12%

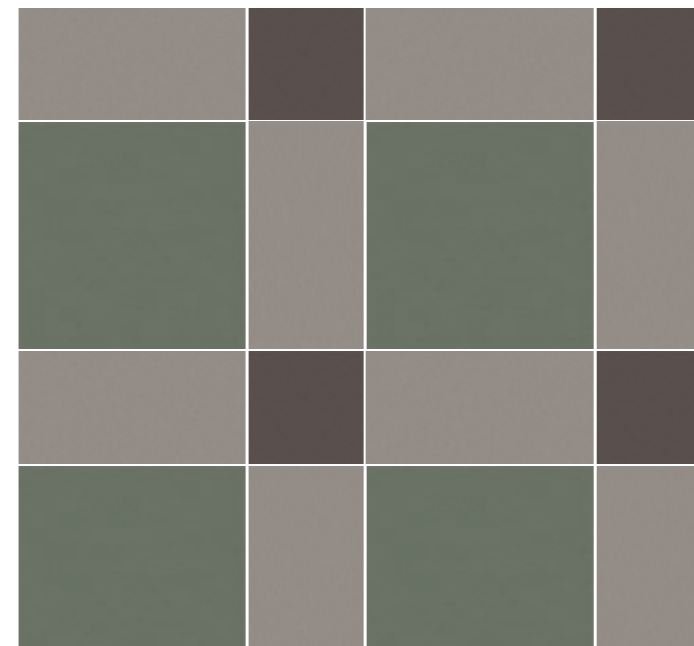




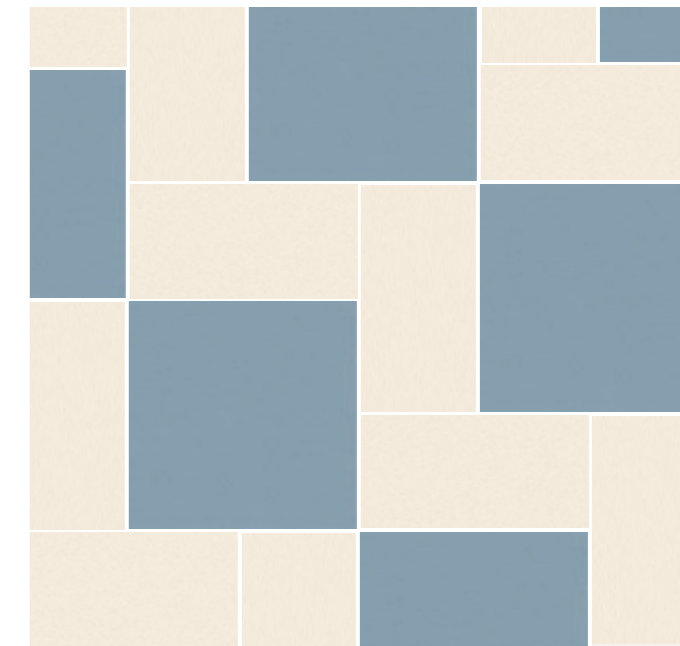
**Solid L** Chalk - 44% & Moss - 44%  
**Solid XS** Basalt - 12%



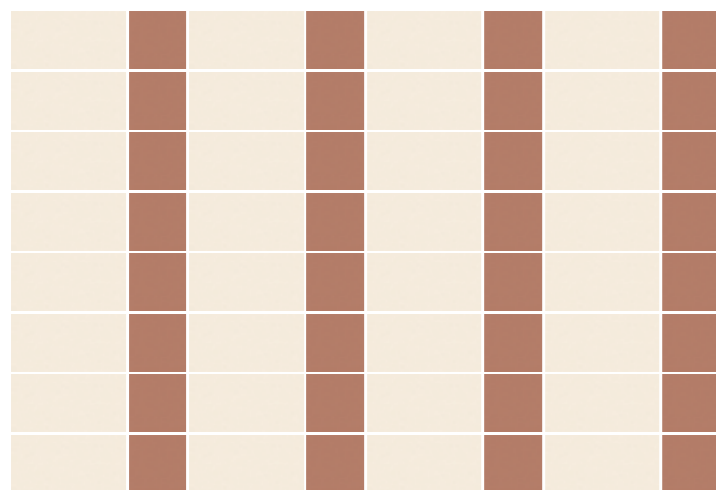
**Solid S** Basalt - 50% & Sky - 50%



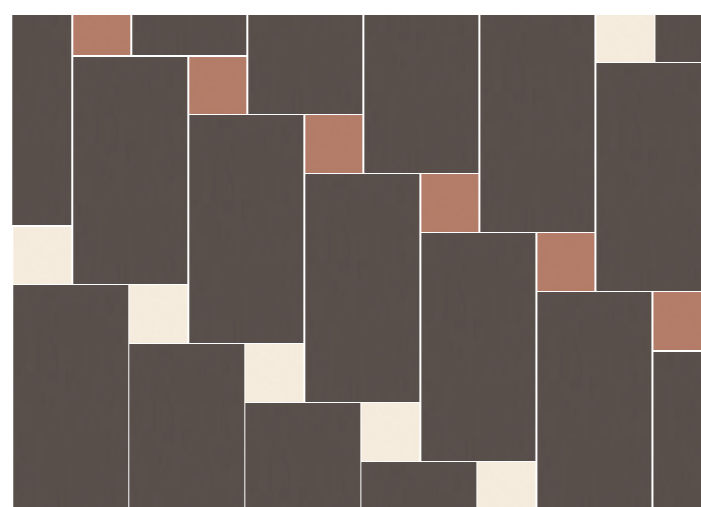
**Solid XL** Moss - 44%  
**Solid L** Ash - 44%  
**Solid M** Basalt - 12%



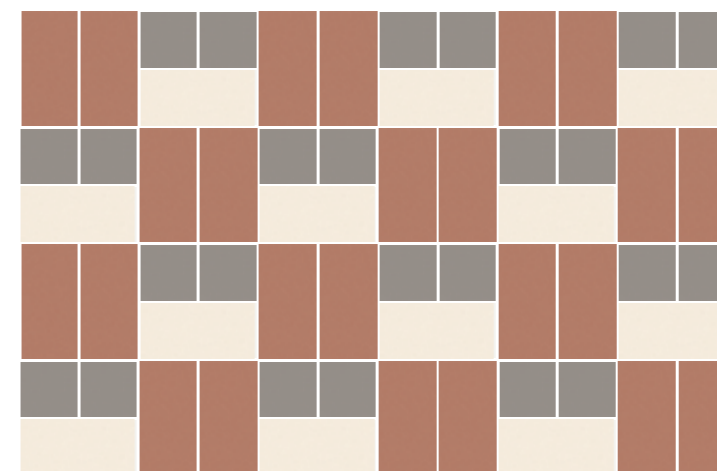
**Solid XL** Sky - 50%  
**Solid L** Chalk - 50%



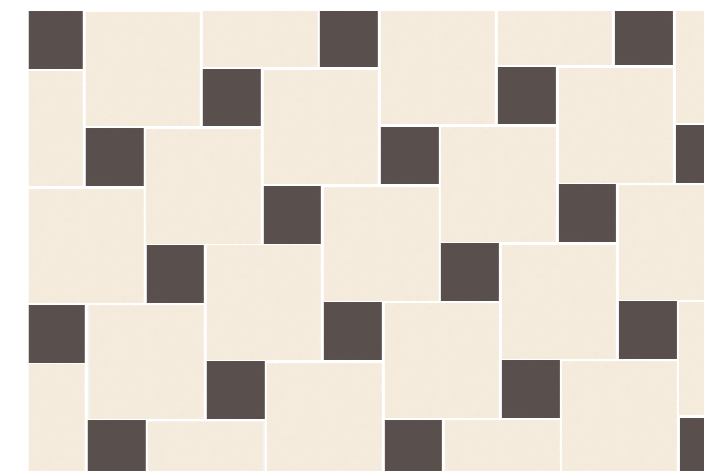
**Solid S** Chalk - 66,6%  
**Solid XS** Cotto - 33,3%



**Solid L** Basalt - 80%  
**Solid XS** Cotto - 10% & Chalk - 10%



**Solid S** Cotto - 50% & Chalk - 25%  
**Solid XS** Ash - 25%



**Solid M** Chalk - 80%  
**Solid XS** Basalt - 20%

**¡AVISO!**

La colección SOLID presenta ligeras diferencias de tono debido a su naturaleza (tierra coloreada y sellada). Por esta razón no se recomienda la colocación monocolor, salvo que se utilice una junta de contraste.

**ALMACENAMIENTO**

Para garantizar las características de su acabado, el producto debe mantenerse en su embalaje original hasta el momento de la colocación. Si el producto va a permanecer almacenado durante un largo periodo es conveniente hacerlo bajo cubierta.

**COLOCACIÓN**

Para garantizar una buena adhesión al soporte es necesaria la utilización de materiales de agarre y de rejuntado adecuados al ambiente al que vayan a estar sometidos. La colocación con morteros tradicionales no garantiza una buena adhesión.

La colocación sin juntas es desaconsejable desde cualquier punto de vista técnico, pudiendo ser el origen de diversas patologías. Todos los formatos de esta colección son modulares y combinables entre si. Para un resultado óptimo recomendamos usar 1,5 mm de junta.

**MANTENIMIENTO Y LIMPIEZA**

Finalizada la puesta en obra se recomienda eliminar los restos de materiales de agarre y rejuntado con un desincrustante comercial diseñado expresamente para baldosas cerámicas, rebajado con agua, permaneciendo en contacto con la superficie a limpiar no más de 5 minutos.

Como norma general no deben utilizarse detergentes en polvo ni estropajos metálicos o abrasivos. Generalmente será suficiente con una esponja, agua tibia y un jabón líquido neutro. Posteriormente aclarar con abundante agua limpia.

**IMPORTANT!**

SOLID collection presents slight tone variations due to its nature (sealed through body). Therefore we do not recommend the installation of a single colour unless a contrast grout is used.

**WAREHOUSING**

In order to guarantee the characteristics of the finish the product must be kept in its original packaging until the time of fixing. If the product is likely to be stored for a long period of time it should be suitably covered.

**TILE FIXING**

To ensure the products adhere correctly to the surface, it is essential to use specific adhesive and grouting material. This must also be suitable for the environment they will have to withstand. Fitting with traditional mortars does not ensure good adhesion.

Fitting tiles without joints is not advisable from any technical point of view as this may lead to various problems. All formats in this collection are modular and combinable with each other. For an optimal result we advise to use 1,5 mm (0.06") grout.



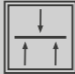







**MAINTENANCE AND CLEANING**

Once the materials have been fitted, it is advisable to remove any remaining adhesive and grouting material by using a commercial descaling product designed especially, diluted with water. The descaling product must not remain in contact with the surface to be cleaned for more than 5 minutes.

As a general guideline, powder detergents should not be used, not wire wool or abrasive materials. Generally a sponge will be sufficient with warm water and liquid neutral soap. Then rinse with plenty of clean water.

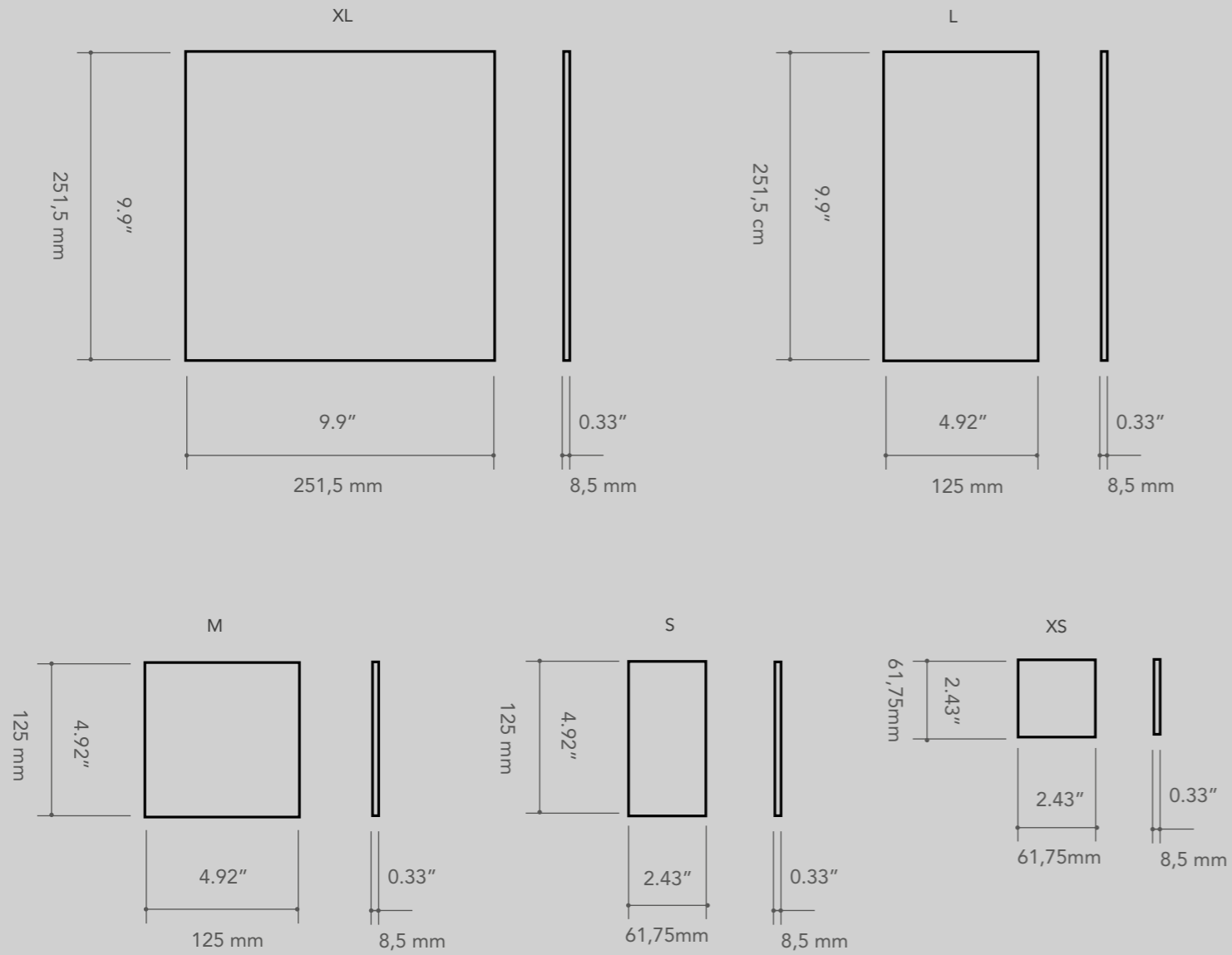
**Dry-pressed ceramic tiles with water absorption B la ≤ 0,5% for interior and exterior floors and walls.**

Baldosas cerámicas prensadas en seco con absorción de agua B la ≤ 0,5% para suelos y paredes interiores y exteriores.

FEATURES / CARACTERÍSTICAS	SPECIFICATION / ESPECIFICACIÓN	NORMA
 Dimensional Features	XL: 251,5mm +/- 0,6 % x 251,5mm +/- 0,6 % x 8,5 mm +/- 5 % L: 251,5mm +/- 0,6 % x 125mm +/- 0,9 mm x 8,5 mm +/- 5 % M: 125mm +/- 0,9 mm x 125mm +/- 0,9 mm x 8,5 mm +/- 5 % S: 125mm +/- 0,9 mm x 61,75mm +/- 0,9 mm x 8,5 mm +/- 5 % XS: 61,75mm +/- 0,9 mm x 61,75mm +/- 0,9 mm x 8,5 mm +/- 5 %	UNE-EN ISO 10545-2:1998
 Water absorption	$E_b \leq 0,5\%$	UNE-EN ISO 10545-3:1997
 Modulus of rupture	Minimum 35 N/mm <sup>2</sup> Individual Minimum 32 N/mm <sup>2</sup>	UNE-EN ISO 10545-4:2012
 Resistance to deep abrasion	< 175 mm <sup>3</sup>	UNE-EN ISO 10545-7:1999
 Crazing resistance	Pass	UNE-EN ISO 10545-11:1997
 Frost resistance	Pass	UNE-EN ISO 10545-11:1997
 Household products resistance	GA	UNE-EN ISO 10545-13:1998
 Chemical resistance	GHA	UNE-EN ISO 10545-13:1998
 Stain resistance	>3	UNE-EN ISO 10545-14:1998
 Non-slip value	R10 / CLASS 2 DCOF >0,42	DIN 51130:2014 ANSI A137.1:2012



**SOLID**



Model	Size (in)	Pieces/box	lb/box	sq ft/box	Box/pallet	sq ft/pallet
Solid XS	2.5"x2.5"	112	17.90 lb	4.607 sq ft	120	522.840 sq ft
Solid S	2.5"x5"	56	18.59 lb	4.661 sq ft	120	559.320 sq ft
Solid M	5"x5"	39	25.11 lb	6.555 sq ft	85	557.175 sq ft
Solid L	5"x10"	40	54.23 lb	13.541 sq ft	48	649.968 sq ft
Solid XL	10"x10"	20	52.84 lb	13.616 sq ft	48	653.568 sq ft

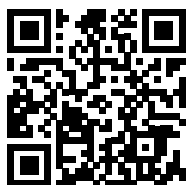
Modelo Model	Tamaño (cm) Size (cm)	Piezas/caja Pieces/box	Kg/caja kg/box	m <sup>2</sup> /caja m <sup>2</sup> /box	Cajas/palet Box/pallet	m <sup>2</sup> /palet m <sup>2</sup> /pallet
Solid XS	6,2x6,2 cm	112	8,12 kg	0,428 m <sup>2</sup>	120	51,360 m <sup>2</sup>
Solid S	6,2x12,5 cm	56	8,43 kg	0,433 m <sup>2</sup>	120	51,960 m <sup>2</sup>
Solid M	12,5x12,5 cm	39	11,39 kg	0,609 m <sup>2</sup>	85	51,765 m <sup>2</sup>
Solid L	12,5x25 cm	40	24,60 kg	1,258 m <sup>2</sup>	48	60,384 m <sup>2</sup>
Solid XL	25x25 cm	20	23,97 kg	1,265 m <sup>2</sup>	48	60,720 m <sup>2</sup>

Designed by



Polígono Pont, Avda. de España 114  
12180 Cabanes,  
Castellón (Spain)  
t. +34 964 331 910 / f. +34 964 331 911

[www.wowdesigneu.com](http://www.wowdesigneu.com)  
[comercial@wowdesigneu.com](mailto:comercial@wowdesigneu.com)



---

**©2019 Tendencias Cerámicas**

WOW, registered trademark of Tendencias Cerámicas, S.L.

The brand use or reproduction of the contents of this catalog, is protected by copyright law. Any use of the brand or reproduction thereof, in part or total, must be authorized by Tendencias Cerámicas, S.L. Otherwise, this action can be sanctioned according to the Law.

---

**©2019 Tendencias Cerámicas**

WOW, marca registrada por Tendencias Cerámicas, S.L.

La utilización de la marca o la reproducción del contenido de este catálogo está protegida por la Ley de Propiedad Intelectual. Cualquier uso de la marca o la reproducción del mismo, en parte o en su totalidad, debe ser autorizada por Tendencias Cerámicas, S.L., pudiendo, en caso contrario, ser esta acción sancionada de acuerdo con la Ley.

---

WOW reserves the right to modify and/or discontinue certain models displayed in this catalogue.

The colour of the pieces displayed herein may differ slightly from originals.

The settings shown in this catalogue are design proposals for advertising purposes.

In real situations in which the pieces are laid, the installation instructions published by WOW should be followed.

---

WOW se reserva el derecho de modificar y/o suprimir ciertos modelos expuestos en este catálogo sin previo aviso.

Los colores de las piezas pueden presentar ligeras diferencias respecto a las originales.

Los ambientes que se muestran en este catálogo son sugerencias decorativas de carácter publicitario, debiéndose utilizar en la instalación real las instrucciones de colocación editadas por WOW.





Designed by



[wowdesigneu.com](http://wowdesigneu.com)