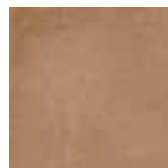




Pure White*
5.5" x 5.5"
Sq. Ft.: \$13.39 SF - Pc.: \$2.74 + Freight



Old White*
5.5" x 5.5"
Sq. Ft.: \$13.39 SF - Pc.: \$2.74 + Freight



Terra*
5.5" x 5.5"
Sq. Ft.: \$13.39 SF - Pc.: \$2.74 + Freight



Pottery*
5.5" x 5.5"
Sq. Ft.: \$14.90 SF - Pc.: \$3.05 + Freight



Teal*
5.5" x 5.5"
Sq. Ft.: \$13.39 SF - Pc.: \$2.74 + Freight



Boheme*
5.5" x 5.5"
Sq. Ft.: \$13.39 SF - Pc.: \$2.74 + Freight



Grey*
5.5" x 5.5"
Sq. Ft.: \$13.39 SF - Pc.: \$2.74 + Freight



Graphite*
5.5" x 5.5"
Sq. Ft.: \$13.39 SF - Pc.: \$2.74 + Freight



Diamond Pure White*
5.5" x 9.5"
Sq. Ft.: \$17.20 SF - Pc.: \$3.08 + Freight



Diamond Old White*
5.5" x 9.5"
Sq. Ft.: \$17.20 SF - Pc.: \$3.08 + Freight



Diamond Terra*
5.5" x 9.5"
Sq. Ft.: \$17.20 SF - Pc.: \$3.08 + Freight



Diamond Pottery*
5.5" x 9.5"
Sq. Ft.: \$18.46 SF - Pc.: \$3.31 + Freight



Diamond Teal*
5.5" x 9.5"
Sq. Ft.: \$17.20 SF - Pc.: \$3.08 + Freight



Diamond Boheme*
5.5" x 9.5"
Sq. Ft.: \$17.20 SF - Pc.: \$3.08 + Freight



Diamond Grey*
5.5" x 9.5"
Sq. Ft.: \$17.20 SF - Pc.: \$3.08 + Freight



Diamond Graphite*
5.5" x 9.5"
Sq. Ft.: \$17.20 SF - Pc.: \$3.08 + Freight



Diamond Wood Mid*
5.5" x 9.5"
Sq. Ft.: \$17.20 SF - Pc.: \$3.08 + Freight



Diamond Paths*
5.5" x 9.5"
Sq. Ft.: \$18.46 SF - Pc.: \$3.31 + Freight
*6 pieces random mix ed in box



Rounded Edge*
0.43" x 5.5"
Pc.: \$7.90 + Freight
*available in white, terra, teal, boheme, grey and graphite only

***Special order items DO NOT include freight.
*Special order items are sold in FULL CARTONS ONLY.**

5.5" X 5.5" packing: 26 pcs. (5.33 sq. ft.) per carton, Weight: 20.59 lbs. per carton
5.5" x 9.5" diamond packing: 28 pcs. (5.02 sq. ft.) per carton, Weight: 18.14 lbs. per carton
.43" x 5.5" round edge packing: 10 pcs. per carton, Weight: 0.53 lbs. per carton

It is recommended that all tile products and related materials be installed as per TCNA Standards

Floor/Wall Tile



Frost Resistant



PEI



PEI



PEI



DCOF



Water Absorption

