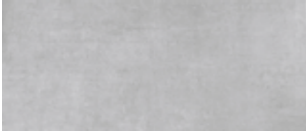


ALL FIELD TILES SOLD IN FULL CARTONS ONLY

NYUMA

Unglazed, Through Body, Rectified Porcelain Tile



NY01-1224N
Quicklime
12" x 24"
Sq. Ft.: \$7.95 – Pc.: \$15.43



NY01-24N
Quicklime
24" x 24"
Sq. Ft.: \$8.95 – Pc.: \$34.73



NY02-1224N
Portland
12" x 24"
Sq. Ft.: \$7.95 – Pc.: \$15.43



NY02-24N
Portland
24" x 24"
Sq. Ft.: \$8.95 – Pc.: \$34.73



NY03-1224N
Torching
12" x 24"
Sq. Ft.: \$7.95 – Pc.: \$15.43



NY03-24N
Torching
24" x 24"
Sq. Ft.: \$8.95 – Pc.: \$34.73



NY04-1224N
Parker
12" x 24"
Sq. Ft.: \$7.95 – Pc.: \$15.43



NY04-24N
Parker
24" x 24"
Sq. Ft.: \$8.95 – Pc.: \$34.73



NY05-1224N
Talcum
12" x 24"
Sq. Ft.: \$7.95 – Pc.: \$15.43



NY05-24N
Talcum
24" x 24"
Sq. Ft.: \$8.95 – Pc.: \$34.73



NY06-1224N
Shotcrete
12" x 24"
Sq. Ft.: \$7.95 – Pc.: \$15.43



NY06-24N
Shotcrete
24" x 24"
Sq. Ft.: \$8.95 – Pc.: \$34.73

12" x 24" Natural packing: 7 pcs. (13.58 sq.ft.) per carton, Weight: 58.31 lbs. per carton
24" x 24" Natural packing: 3 pcs. (11.62 sq.ft.) per carton, Weight: 49.59 lbs. per carton

It is recommended that all tile products and related materials be installed as per TCNA Standards

Floor/Wall Tile	Frost Resist.	Water Absorption	Shade Variation	DCOF (natural)	Origin

statements | TILE & STONE