

LOGWOOD

# LOGWOOD

white

3 formati - 7 colori - 2 superfici  
3 formats - 7 colors - 2 surfaces

grey

brown

**cream**

**16,4x99,8 Out**

**beige**

**nut**

**16,4x99,8**

**taupe**

**24,8x99,8**

**25x150**  
**NEW FORMAT**





# LOGWOOD



## white

Semplicità, eleganza, la naturalezza

**Simplicity, elegance,  
del legno...**

**naturalness Wood ...**

# white





# LOGWOOD

## cream

Vivere la natura attraverso

**Experience nature through**

le sfumature del legno...

**wood shades ...**







**cream**







# LOGWOOD

## beige

L'originalità e il fascino

**The originality and charm**

di una linea autentica...

**a line of authentic ...**

# beige



Beige 16,4x99,8 - 6,6"x39,9"  
Beige 24,8x99,8 - 9,9"x39,9"



# LOGWOOD



**taupe**

**Ottima abbinabilità e incomparabile  
Excellent versatility and incomparable  
bellezza estetica...  
aesthetic beauty ...**







# taupe



Taupe 16,4x99,8 - 6,6"x39,9"  
Taupe 24,8x99,8 - 9,9"x39,9"



The background of the slide is a collage of wood textures. The top-left corner features a vertical strip of dark, horizontally-grained wood. The middle section is dominated by a large, horizontal plank of dark wood with a prominent, wavy grain pattern and a central knot. The bottom-left corner shows another vertical strip of wood with a similar grain to the top-left. The right side of the slide is a solid, light beige color where the text is located.

# LOGWOOD

## nut

**Arredare con gusto e stile  
To furnish with taste and style  
attraverso la bellezza del legno  
through the beauty of the wood**

# nut





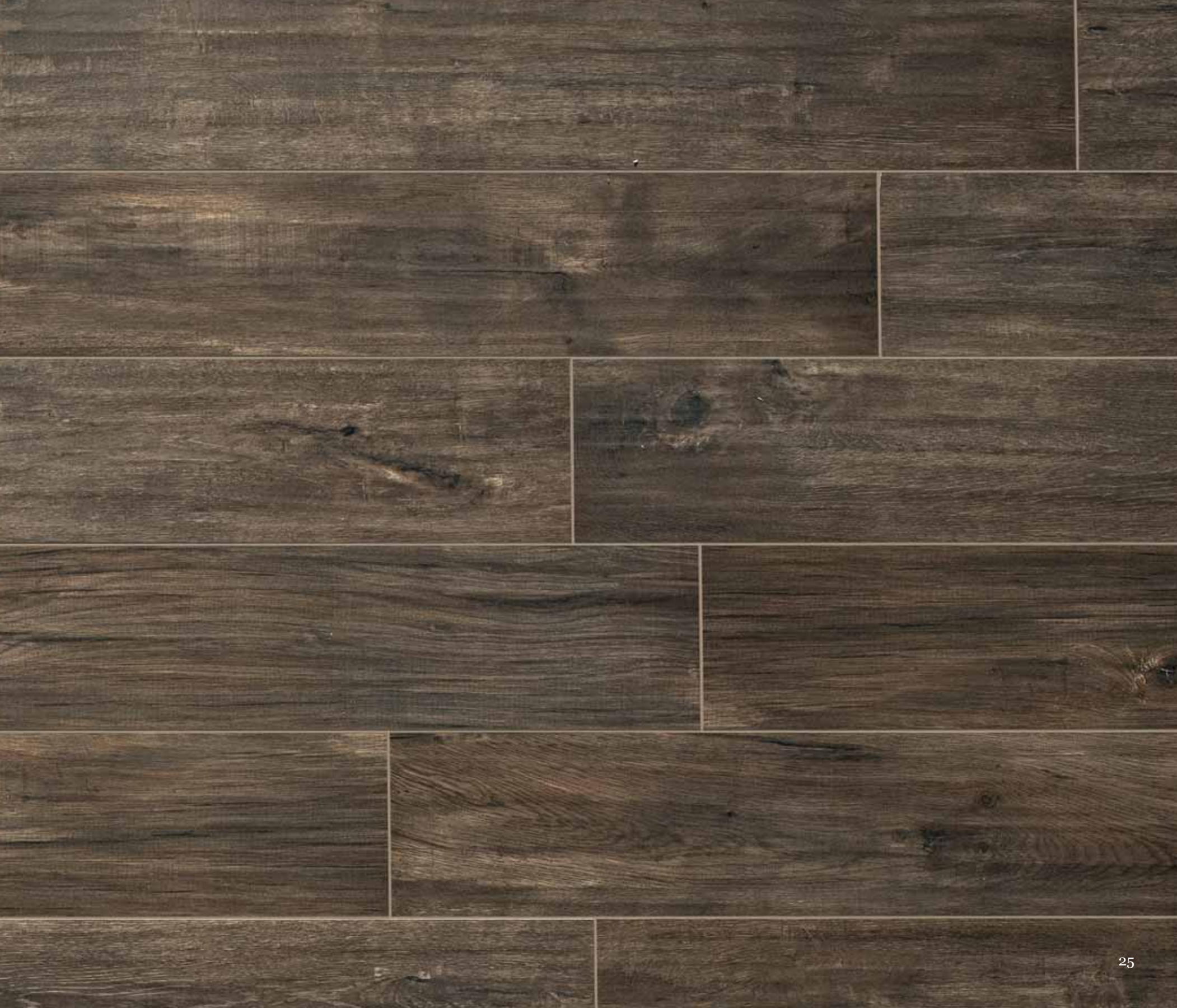
# LOGWOOD

## brown

Ampia gamma di tonalità per  
**Wide range of shades to suit**  
soddisfare ogni esigenza...  
**every need...**









**brown**



# LOGWOOD



**grey**

**un materiale che racchiude**

**A material that holds**

**secoli di storia...**

**centuries of history ...**



grey





# LOGWOOD

25x150 - 24,8x99,8 - 16,4x99,8  
10"x60" - 9,9"x39,9" - 6,6"x39,9"

## White



DLO1610 LOGWOOD WHITE 16,4x99,8 6,6"x39,9"

611/MQ



DLO2510 LOGWOOD WHITE 24,8x99,8 9,9"x39,9"

606/MQ



DLOM10 LOGWOOD WHITE MIX  
32,6x32,6 12,8"x12,8"

534/PZ

## Cream



DLO1620 LOGWOOD CREAM 16,4x99,8 6,6"x39,9"

611/MQ



DLO2520 LOGWOOD CREAM 24,8x99,8 9,9"x39,9"

606/MQ



DLOM20 LOGWOOD CREAM MIX  
32,6x32,6 12,8"x12,8"

534/PZ



## Beige



DLO1680 LOGWOOD BEIGE 16,4x99,8 6,6"x39,9"

611/MQ



DLO2580 LOGWOOD BEIGE 24,8x99,8 9,9"x39,9"

606/MQ



DLOM80 LOGWOOD BEIGE MIX  
32,6x32,6 12,8"x12,8"

534/PZ

## Grey



DLO1640 LOGWOOD GREY 16,4x99,8 6,6"x39,9"

611/MQ



DLO2540 LOGWOOD GREY 24,8x99,8 9,9"x39,9"

606/MQ



DLOM40 LOGWOOD GREY MIX  
32,6x32,6 12,8"x12,8"

534/PZ

# LOGWOOD

25x150 - 24,8x99,8 - 16,4x99,8  
10"x60" - 9,9"x39,9" - 6,6"x39,9"

## Brown



DLO1670 LOGWOOD BROWN 16,4x99,8 6,6"x39,9"

611/MQ



DLO2570 LOGWOOD BROWN 24,8x99,8 9,9"x39,9"

606/MQ



DLOM70 LOGWOOD BROWN MIX  
32,6x32,6 12,8"x12,8"

534/PZ

## Taupe



DLO1660 LOGWOOD TAUPE 16,4x99,8 6,6"x39,9"

611/MQ



DLO2560 LOGWOOD TAUPE 24,8x99,8 9,9"x39,9"

606/MQ



DLOM60 LOGWOOD TAUPE MIX  
32,6x32,6 12,8"x12,8"

534/PZ

## Nut



DLO1650 LOGWOOD NUT 16,4x99,8 6,6"x39,9"

611/MQ



DLO2550 LOGWOOD NUT 24,8x99,8 9,9"x39,9"

606/MQ



DLOM50 LOGWOOD NUT MIX  
32,6x32,6 12,8"x12,8"

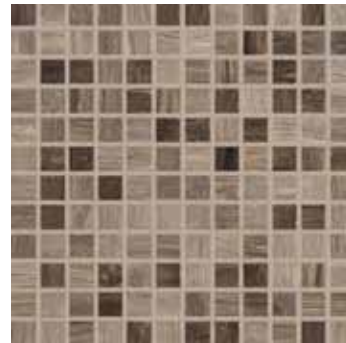
534/PZ

## Decori - Decors



DLOMH258 LOGWOOD MIX HOT  
30x30 12"x12"

556/PZ



DLOMC467 LOGWOOD MIX COLD  
30x30 12"x12"

556/PZ

# LOGWOOD

**NEW FORMAT**  
**25x150 - 10"x60"**

PORCELLANATO  
IMPASTO COLORATO  
DIGITAL  
TECHNOLOGY

## White



DLO215010 LOGWOOD WHITE 25x150 10"x60"

630/MQ

## Cream



DLO215020 LOGWOOD CREAM 25x150 10"x60"

630/MQ

## Beige



DLO215080 LOGWOOD BEIGE 25x150 10"x60"

630/MQ

## Grey



DLO215040 LOGWOOD GREY 25x150 10"x60"

630/MQ

## Brown



DLO215070 LOGWOOD BROWN 25x150 10"x60"

630/MQ

## Taupe



DLO215060 LOGWOOD TAUPE 25x150 10"x60"

630/MQ

## Nut



DLO215050 LOGWOOD NUT 25x150 10"x60"

630/MQ



# grey out



# grey out







# LOGWOOD OUT

16,4x99,8 - 25x150  
6,6"x39,9" - 10"x60"

White



DLO16100 LOGWOOD WHITE OUT 16,4x99,8 6,6"x39,9"

613/MQ

Cream



DLO16200 LOGWOOD CREAM OUT 16,4x99,8 6,6"x39,9"

613/MQ

Beige



DLO16800 LOGWOOD BEIGE OUT 16,4x99,8 6,6"x39,9"

613/MQ

Grey



DLO16400 LOGWOOD GREY OUT 16,4x99,8 6,6"x39,9"

613/MQ

Brown



DLO16700 LOGWOOD BROWN OUT 16,4x99,8 6,6"x39,9"

613/MQ

## Taupe



DLO16600 LOGWOOD TAUPE OUT 16,4x99,8 6,6"x39,9"

613/MQ

## Nut



DLO16500 LOGWOOD NUT OUT 16,4x99,8 6,6"x39,9"

613/MQ

## NEW FORMAT 25x150 - 10"x60"

## Grey



DLO2150400 LOGWOOD GREY OUT 25x150 10"x60"

634/MQ

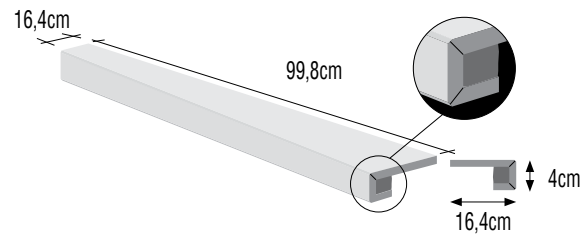
## Cream



DLO2150200 LOGWOOD CREAM OUT 25x150 10"x60"

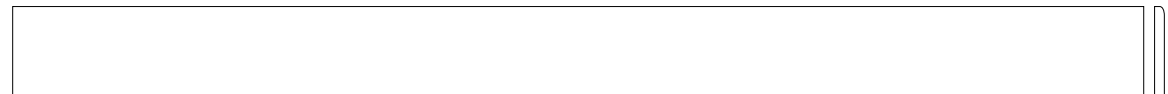
634/MQ

## Pezzi speciali In - Special Pieces In



DL010S	LOGWOOD BIANCO SCALINO C. RETTA	16,4X99,8	6,6"x39,9"
DL020S	LOGWOOD CREAM SCALINO C. RETTA	16,4X99,8	6,6"x39,9"
DL080S	LOGWOOD BEIGE SCALINO C. RETTA	16,4X99,8	6,6"x39,9"
DL040S	LOGWOOD GREY SCALINO C. RETTA	16,4X99,8	6,6"x39,9"
DL070S	LOGWOOD BROWN SCALINO C. RETTA	16,4X99,8	6,6"x39,9"
DL060S	LOGWOOD TAUPE SCALINO C. RETTA	16,4X99,8	6,6"x39,9"
DL050S	LOGWOOD NUT SCALINO C. RETTA	16,4X99,8	6,6"x39,9"

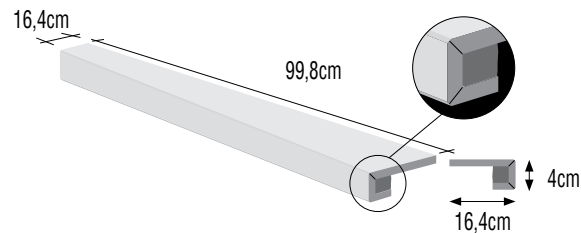
785/PZ



DLOB10	LOGWOOD WHITE BATTISCOPA	8x99,8	3 1/8"x39,9"
DLOB20	LOGWOOD CREAM BATTISCOPA	8x99,8	3 1/8"x39,9"
DLOB80	LOGWOOD BEIGE BATTISCOPA	8x99,8	3 1/8"x39,9"
DLOB40	LOGWOOD GREY BATTISCOPA	8x99,8	3 1/8"x39,9"
DLOB70	LOGWOOD BROWN BATTISCOPA	8x99,8	3 1/8"x39,9"
DLOB60	LOGWOOD TAUPE BATTISCOPA	8x99,8	3 1/8"x39,9"
DLOB50	LOGWOOD NUT BATTISCOPA	8x99,8	3 1/8"x39,9"

527/PZ

## Pezzi speciali Out - Special Pieces Out



DL0100S	LOGWOOD BIANCO OUT SCALINO C. RETTA	16,4X99,8	6,6"x39,9"
DL0200S	LOGWOOD CREAM OUT SCALINO C. RETTA	16,4X99,8	6,6"x39,9"
DL0800S	LOGWOOD BEIGE OUT SCALINO C. RETTA	16,4X99,8	6,6"x39,9"
DL0400S	LOGWOOD GREY OUT SCALINO C. RETTA	16,4X99,8	6,6"x39,9"
DL0700S	LOGWOOD BROWN OUT SCALINO C. RETTA	16,4X99,8	6,6"x39,9"
DL0600S	LOGWOOD TAUPE OUT SCALINO C. RETTA	16,4X99,8	6,6"x39,9"
DL0500S	LOGWOOD NUT OUT SCALINO C. RETTA	16,4X99,8	6,6"x39,9"

785/PZ

Nelle scatole la disposizione delle piastrelle è casuale ed alcune potrebbero ripetersi: si consiglia quindi di miscelare i pezzi prima delle pose.

In the boxes the disposition of the floor tiles is accidental and some could be repeated: it is advised therefore to mix few tiles before laying.

Dans les boîtes la disposition des carreaux est fortuite et certaines pourraient se répéter: on conseille donc de mélanger les pièces avant posa.

Boxen in der Anordnung der Fliesen ist zufällig und einige vielleicht wiederholt werden:

Es wird vorgeschlagen, um die Stücke platziert, bevor mischen.

### CONSIGLI PER LA POSA

**POSA A CORRERE** - La posa a "correre" necessita una maggiore premura nelle fasi di livellaggio e accostamento dei singoli pezzi, per poter attenuare eventuali differenze di planarità. Sebbene inevitabili queste piccole differenze non compromettono un buon risultato finale; dunque è consigliato sfalsare i singoli pezzi di 15-20 cm massimo.

**IMPORTANTE** - La posa sfalsata al 50% non è consigliata. Trattandosi di materiali ceramici si suggeriscono le seguenti pose:

### FIXING ADVICE

**PARALLEL FIXING** - To minimize differences in the flatness of the tiles, "parallel" fixing requires greater attention when the individual tiles are positioned and levelled.

Although these small differences are inevitable, they will not spoil a good final result: the individual tiles should thus be staggered 15-20 cm at most.

**IMPORTANT** - Please note that fixing in a 50% staggered configuration is not recommended. We suggest the following fixing configurations for these ceramic materials:

### CONSEILS DE POSE

**POSE A FOND PERDU** - La pose à "fond perdu" nécessite une très grande attention dans les phases de nivellement et d'assemblage des différentes pièces, de manière à atténuer les différences éventuelles de planéité. Ces petites différences sont inévitables, mais ne compromettent pas un bon résultat final: il faut donc décaler les différentes pièces de 15-20 cm maximum.

**IMPORTANT** - A pose décalée à 50% n'est pas recommandée. Pour les matériaux céramiques nous conseillons les poses suivantes:

### TIPPS ZUR VERLEGUNG

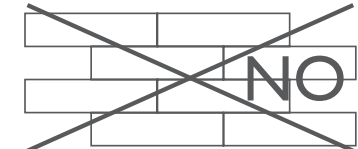
**FORTLAUFENDE VERLEGUNG** - Die fortlaufende Verlegung (eine Platte nach der anderen) erfordert mehr Sorgfalt beim Ebenen und Anlegen der einzelnen Teile, um eventuelle Ebenheitsunterschiede zu mindern. Obwohl sie unvermeidlich sind, stellen diese kleinen Unterschiede keine Beeinträchtigung des guten Endergebnisses dar: Es ist deshalb ratsam, die einzelnen Teile um max. 15-20 cm zu versetzen.

**WICHTING!** - Die um 50% versetzte Verlegung nicht empfohlen ist. Da es sich um Keramikmaterial handelt, kann man die folgenden Verlegungen empfehlen:

SÌ POSA 10%/20%



NO POSA 50%



Dati tecnici secondo norme: Tecnical data conform to: Caractéristiques techniques d'après normes: Technische Daten nach den Normen:			LOGWOOD	LOGWOOD OUT
	Caratteristiche tecniche Technical data Caractéristiques techniques Technische Daten	Norme Norms Normes Norm	Valori Value Valeur Wert	Valori Value Valeur Wert
	Resistenza all'abrasione Abrasion resistance Résistance à l'abrasion Abrasionswiderstandigkeit	ISO 10545-7	PEI V	PEI V
	Assorbimento d'acqua Water absorption Absorption d'eau Wasseraufnahme	ISO 10545-3	≤ 0,5%	≤ 0,5%
	Resistenza alla flessione Breaking modulus Résistance à la flexion Biegefestigkeit	ISO 10545-4	40÷55 N/mm2	40÷55 N/mm2
	Durezza Mohs Mohs hardness Dureté Mohs Haerte Mohs	EN101	8	7
	Resistenza all'attacco acido e basico Glaze resistance to acid and alkaline attack Résistance aux acides et aux bases Saeure-und laugenfestigkeit	ISO 10545-13	Resiste Resists Resiste Bestanding	Resiste Resists Resiste Bestanding
	Resistenza alle macchie Stain resistance Résistance aux taches Fleckenfestigkeit	ISO 10545-14	Totale Complete Totale Absolut	Totale Complete Totale Absolut
	Resistenza al gelo Resistance to frost Résistance au gel Frostbeständigkeit	ISO 10545-12	Non gelive Frost proof Ingélif Frostsicher	Non gelive Frost proof Ingélif Frostsicher
	Scivolosità Slipperiness Degré de glissement Rutschhemmung	DIN 51130	R10	R11
ASTM	Scivolosità Slipperiness Degré de glissement Rutschhemmung	ASTM C1028	>0,60	>0,60
	Resistenza allo scivolamento Slip resistance Résistance au glissement Rutschhemmung	DIN 51097	B	C
	Scivolamento B.C.R.A. Slipperiness B.C.R.A. Degré de glissement B.C.R.A. Rutschhemmung B.C.R.A.	TORTUS	>0,40	>0,40



I valori indicati nella tabella si riferiscono alle prove eseguite sul colore CREAM.  
The values in the table refer to the tests performed on color CREAM.  
Les valeurs indiquées dans le tableau se réfèrent aux essais exécutés sur le couleur CREAM.  
Die in der Tabelle angegebenen Werte beziehen sich auf die Tests die auf dem Farbe CREAM ausgeführt wurden.

Imballi - Packing - Emballage - Verpackung		PORCELLANATO DIGITAL IMPASTO COLORATO TECHNOLOGY			LOGWOOD		
FORMATO size format	Pz./SCATOLA pieces/box pieces/boîte	Mq./SCATOLA sqm/box mq/boîte	Kg./SCATOLA Kg/box Kg/boîte	SCATOLA/PALLET boxes/pallet boîtes/palette	Mq./PALLET sqm/pallet mq/pallet	Kg./PALLET Kg/pallet Kg/pallet	SPESSORE Thickness Epaisseurs
24,8x99,8 / 9,9"x39,9"	4	1,000	22,80	48	48,00	1.021	10,5 mm
16,4x99,8 / 6,6"x39,9"	6	0,980	22,40	48	47,04	1.090	10,5 mm
25x150 / 10"x60"	3	1,125	28,20	42	47,25	1.200	10,5 mm
16,4x99,8 / 6,6"x39,9" out	6	0,980	22,40	48	47,04	1.090	10,5 mm
25x150 / 10"x60" out	3	1,125	28,20	42	47,25	1.200	10,5 mm
32,6x32,6 / 12,8"x12,8" mix	4	-	-	-	-	-	-
8x99,8 / 3 <sup>1/8</sup> "x39,9" battiscopa	6	-	-	-	-	-	-
16,4x99,8 / 6,6"x39,9" scalino c. retta	2	-	-	-	-	-	-
16,4x99,8 / 6,6"x39,9" scalino c. retta out	2	-	-	-	-	-	-

