

**FZGSTB8**  
**St Tropez Black**  
8" X 8"  
Sq. Ft.: \$13.63 - PC.: \$5.98



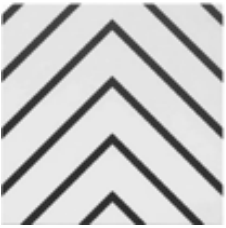
**FZGKG8**  
**Keraki Gold**  
8" X 8"  
Sq. Ft.: \$13.63 - PC.: \$5.98



**FZGDOB**  
**Donjon**  
8" X 8"  
Sq. Ft.: \$13.63 - PC.: \$5.98



**FZGBWF8**  
**BW Flash**  
8" X 8"  
Sq. Ft.: \$13.63 - PC.: \$5.98



**FZGTB8**  
**Trois Bandes**  
8" X 8"  
Sq. Ft.: \$13.63 - PC.: \$5.98



**FZGMS8**  
**Marble Star**  
8" X 8"  
Sq. Ft.: \$13.63 - PC.: \$5.98



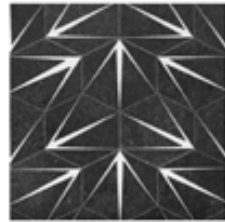
**FZGMA8**  
**Macrame**  
8" X 8"  
Sq. Ft.: \$13.63 - PC.: \$5.98



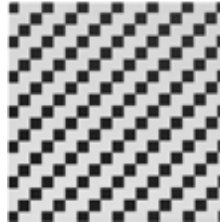
**FZGKE8**  
**Kerala**  
8" X 8"  
Sq. Ft.: \$13.63 - PC.: \$5.98



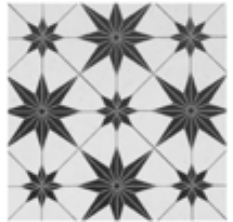
**FZGGOA8**  
**Goa**  
8" X 8"  
Sq. Ft.: \$13.63 - PC.: \$5.98



**FZGEX8**  
**Exagona**  
8" X 8"  
Sq. Ft.: \$13.63 - PC.: \$5.98



**FZGCO8**  
**Couture**  
8" X 8"  
Sq. Ft.: \$13.63 - PC.: \$5.98



**FZGAS8**  
**Asteri**  
8" X 8"  
Sq. Ft.: \$13.63 - PC.: \$5.98

**8" x 8" packing:** 33 pcs. (14.47 sq.ft.) per carton. Weight: 57.09 lbs. per carton

*It is recommended that all tile products and related materials be installed as per TCNA Standards*

