

DISCONTINUED - CHECK STOCK



ALAL160
Almond
12" x 24"
Sq. Ft.: \$5.98 – Pc. \$11.66



ALBE160
Beige
12" x 24"
Sq. Ft.: \$5.98 – Pc. \$11.66



ALAR160
Argento
12" x 24"
Sq. Ft.: \$5.98 – Pc. \$11.66



ALGR160
Grigio
12" x 24"
Sq. Ft.: \$5.98 – Pc. \$11.66



ALNE160
Nero
12" x 24"
Sq. Ft.: \$5.98 – Pc. \$11.66



ALAL180
Almond
24" X 24"
Sq. Ft.: \$6.98 – Pc: \$27.36



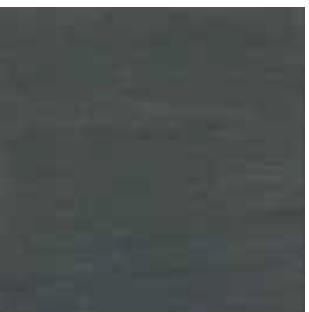
ALBE180
Beige
24" X 24"
Sq. Ft.: \$6.98 – Pc: \$27.36



ALAR180
Argento
24" X 24"
Sq. Ft.: \$6.98 – Pc: \$27.36



ALGR180
Grigio
24" X 24"
Sq. Ft.: \$6.98 – Pc: \$27.36



ALNE180
Nero
24" X 24"
Sq. Ft.: \$6.98 – Pc: \$27.36

12" x 24" packing: 8 pcs (15.60 sq.ft.) per carton, Weight: 47.04 lbs. per carton.

24"x 24" packing: 4 pcs (15.68 sq.ft.) per carton, Weight: 53 lbs. per carton.

It is recommended that all tile products and related materials be installed as per TCNA Standards

Floor/Wall Tile



Frost Resistant



Eco Policy



PEI



DCOF



Origin

